



CREATES PERMANENT SOLUTIONS

Akfix®

MASTER OF SOLUTIONS

CREATES PERMANENT SOLUTIONS

www.Akfix.com

KTL_100/EN.01.01.2021_REV-07

www.Akfix.com



Fire Rated
Products



Adhesive & Glue
Products



Sealant
Products



PU Foam
Products



Aerosol
Products



Coating
Waterproofin & Heat
Insulation Systems



Spray Paint
Products

AKKIM

SEALANTS & ADHESIVES

www.akkim.net



* AKKIM has a right to amend the product information and images in this catalogue without notice. Images and product properties may be different dependent on the target market or sales zone.



CREATES PERMANENT SOLUTIONS

EXPORTING TO MORE THAN
100+
COUNTRIES


450
DIFFERENT PRODUCTS


**EXPORT
CHAMPION**
OF TURKEY FOR
ADHESIVE & GLUES

Akfix[®]
MASTER OF SOLUTIONS

    /Akfixsealants

www.Akfix.com



Fire Rated
Products

04-05



Adhesive
Products

07-29



Sealant
Products

32-44



PU Foam
Products

46-53



Coating
Waterproofing
& Heat Insulation
Systems

56-68



Aerosol
Products

70-71



Automotive
Repair, Care,
Protective Products

73-76



Spray Paint
Products

78-79



Industrial
Repair, Care,
Protective Products

79

Accessories



80

Fire Rated Products

www.Akfix.com



Creates Permanent Solutions

P636 FIRE RATED PU SEALANT

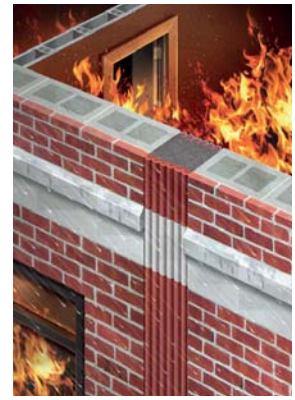
One component, medium modulus polyurethane sealant that cures on exposure to atmospheric humidity and capable of enduring direct flame to certain degrees.

FEATURES

More than 4 hours of fire resistance in certain conditions without using backfilling materials. Possesses permanent elasticity. No sagging - Thixotropic. No surface tackiness after full cure. Do not pick up dirt. No shrinkage. Enhanced storage stability. Can be applied with hand gun and tooled easily. Paintable. Cures bubble-free 25% movement capability. Conforms to BS 6920 for the metallic water soluble impurities. Conforms to the requirements of VOC content specifications in LEED credit EQc4.1 "Low-emitting products" of SCAQMD rule 1168. M2 Fire Rating according to NF P 92-501 radiation test. A+ indoor air quality rating.

APPLICATION AREAS

Fire rated sealing and bonding applications. Expansion joints between many different construction materials. Movement and connection joints in floors. Indoor and outdoor applications for pedestrian and traffic areas. Joints between prefabricated construction materials. Sealing and bonding of ventilation ducts, gutters and spouts etc.



More than 4 hours fire resistance according to EN 1566-4

Fire Class



AC607 FIRE STOP ACRYLIC SEALANT

Single component water based fire rated acrylic sealant ideal for sealing joints to prevent the passage of flammable gases and toxic smoke in compartment walls and floors.

FEATURES

M1 Fire Rating according to NF P 92-501 radiation test. Good unprimed adhesion to most common construction substrates. Easy to apply. Remains flexible. Paintable. Non-slump.

APPLICATION AREAS

Sealing of joints and seams, or at certain areas where requirements for fire resistance are mandatory.



More than 4 hours fire resistance according to EN 1366-4

Fire Class



N920 INTUMESCENT FIRE RATED NEUTRAL SILICONE SEALANT

Graphite containing one-component neutral grade intumescent silicone sealant designed to protect cable entries by forming a gas and watertight seal. Product cures upon exposure to atmospheric humidity. It expands at high temperatures to prevent the passage of smoke and flames

FEATURES

Flexible and durable. Gas and Water tight. Shows Fire resistance properties. Resistant against Water, Alkaline, Chemical agents. Non corrosive. Solvent free. Shock absorbing. Quick and easy installation.

APPLICATION AREAS

Combustible and non combustible pipes. Cables (single cables or bunches of cables). Seals all know materials; PVC & PE sheathed cables etc. Suitable for any shaped duct. Suitable for all common building materials.



140F

FIRE RATED SILICONE SEALANT

Fire retardant, elastic, neutral curing silicone sealant that cures upon exposure to atmospheric humidity. Absorbs movements up to 25%.

FEATURES

Flexible and durable. Water, weather and UV resistant. Resistant against Water, Alkaline, Chemical agents. Non corrosive. Solvent free. Air tight sealing. Quick and easy installation.

APPLICATION AREAS

Fire resistant sealing of connection and expansion joints in constructions. All building and glazing joints which require a fire rating. Suitable for all common building materials.



Classified as B-s1,d0 according to EN 13501-1:2007 +A1:2009



820/820P

B1 FIRE RATED PU FOAM STRAW / GUN

One component, moisture curing, self expanding, ready to use polyurethane foam with propellants which are completely harmless to ozone layer. It has a fire rating of up to 217 minutes in certain configurations.

FEATURES

According to EN 1366-4 fire retardant up to 217 min. Efficient seal against smoke and gas. Does not contain CFC's and H-CFC's. Excellent adhesion & filling capacity. Excellent mounting capacity and stability. High yield up to 45 liters depending on temperature and humidity. Excellent adhesion on most substrates (except Teflon, PE and PP). High filling capacity. High thermal & acoustical insulation value. After cured, it can be painted, cut, trimmed. No shrinkage. Mould and water resistant. Conforms to fire class B1 (DIN 4102).

APPLICATION AREAS

All applications where fire retardant properties are required such as: Installation of door and window frames. Filling and sealing gaps, joints and cavities. Filling of penetrations in walls. Heat insulation of roof construction. Sealing of cable and pipe penetrations. Soundproofing and sealing partition walls. Bonding of insulation materials. Multi-Purpose, adhesion and fixation.



EMISSIONE DANS L'AIR INTERIEUR

Up to 217 minutes fire resistance according to EN 1366-4

CLASSIFIED C UL US

Scan QR code for product video.

840/840P

B2 FIRE RATED PU FOAM STRAW / GUN

Self-extinguishable aerosol polyurethane foam for filling, sealing and bonding gaps. It is designed for easy dispensing through the straw adapter included to each can and gun adapter.

FEATURES

Rated B2 according to DIN 4102. Excellent adhesion to most building materials. It does not contain any propellant gases that are harmful to the ozone layer. It can be painted after curing. It can be cut and trim.

APPLICATION AREAS

Fixing and insulating of door and window frames. Filling and sealing of gaps, joints and cavities. Filling of penetrations in walls. Insulating electrical outlets and water pipes.



ICC ES

EMISSIONE DANS L'AIR INTERIEUR

CLASSIFIED C UL US

Adhesive & Glue Products

www.Akfix.com



Creates Permanent Solutions

HIGH TACK AST POLYMER



AST polymer-based, one component, high quality and professional adhesive with high adhesive strength and initial tack. It is suitable for bonding heavy building materials without the use of clamps and/or fixing tape.

FEATURES

High initial tack. Eco-friendly, free from isocyanate, solvent, acids and halogens. Excellent primerless adhesion to numerous porous and non-porous substrates. Excellent elasticity, no bubble formation, waterproof, no shrinkage, over-paintable.

APPLICATION AREAS

It is specially developed as a universal adhesive for bonding various building materials. It is suitable for elastic bonding of panels, profiles and other pieces on the most common substrates such as: stone, concrete, mirrors, glass, plasterboard, PU, PVC, polyester, plastics, enamel, ceramic, copper, lead, zinc, aluminium, metals, R.V.S., wood, HPL and cement fibre panels etc. Common application areas are: Wall cladding elements and ceiling panels. Sound isolation panels (mineral wool, wood-wool cement & plastic foams). Thermal isolation panels (PUR, PIR, PS). Casings and frames in building construction. Wooden and plastic laths, ornaments and frames. Doorsteps, window sills, skirting boards and cover plates. Complete construction elements (such as roofing and facade elements) in frames.



SHORE A55 ALL MATERIALS & ALL SURFACES



"Conforms to the requirements of VOC content specifications in LEED credit EQc4.1 "Low-emitting products" of SCAQMD rule 116B."



Scan QR code for product video.



FAST & STRONG AST POLYMER



AST polymer-based, one component, hybrid joint-filling sealant with very high built-up of strength. It does not contain solvent or isocyanate and can be applied for multi purposes.

FEATURES

Very high final strength. Waterproof. Becomes plasto-elastic with air humidity. Eco-friendly, free from isocyanate, solvent, acids and halogens. Over-paintable. No bubble formation. Waterproof. Becomes plasto-elastic with air humidity. No shrinkage. Does not need primer (preliminary test recommended). Excellent elasticity and very good adhesion strength.

APPLICATION AREAS

Sealing and bonding of the most common substrates such as natural stone, hard PVC, concrete, wood, glass, metals etc.



SHORE A65 ALL MATERIALS & ALL SURFACES

"Conforms to the requirements of VOC content specifications in LEED credit EQc4.1 "Low-emitting products" of SCAQMD rule 116B."



CURTAIN RAIL ADHESIVE AST POLYMER



One component, high quality and professional adhesive with high adhesive strength and initial tack. It is suitable for bonding curtain rails and curtain track systems without the use of clamps and/or fixing tape.

FEATURES

One component, fast curing, easy to use adhesive foam. Bonding blocks and stones during construction works. Powerful adhesion to concrete and stone variations. Suitable to use at interior and exterior applications. Remarkable resistance to weather conditions. Doesn't form thermal bridges, thanks to the excellent thermal insulation. More economical, practical and easy to use. Minimum expansion during drying period. After dried, no further expansion or shrinkage. No more extra burden or weight to building. Usable at low temperature like 0°C. It does not contain any propellant gases which are harmful to the ozone layer.

APPLICATION AREAS

Bonding structural blocks of non-bearing interior walls. For use where fixed, permanent positioning of stone or concrete products is desired. Concrete pavers/slabs. Segmental retaining walls and columns. Cast stone copings. Landscape blocks and bricks. Polystyrene foam board. Cellular lightweight concrete elements. Ornamental precast. Natural & manufactured stone. Brick, aerated block, cinder block, bims block, gypsum block and gypsum panel bonding. Applications where minimum expansion is needed. Mounting and isolation for frames of windows and doors.



SHORE A55 ALL MATERIALS & ALL SURFACES



"Conforms to the requirements of VOC content specifications in LEED credit EQc4.1 "Low-emitting products" of SCAQMD rule 116B."



Scan QR code for product video.

960

XPS, EPS and INSULATION PANELS ADHESIVE PU FOAM (Straw)

One component aerosol polyurethane adhesive foam curing swiftly with moisture. Providing very fast and powerful adhesion for various construction materials, especially highly recommended for heat insulation systems.

FEATURES

Powerful adhesion of polystyrene heat panels (XPS and EPS). Ready to mechanical fastening in two hours. More economical. Ready to use in aerosol can. Up to 9m² heat insulation panel adhesion for each can. Minimum expansion during drying period. After dried, no further expansion and shrinkage. A lighter material compared to plaster which used in heat insulation systems. No more extra burden or weight to building. Depending on the humidity and temperature.

APPLICATION AREAS

Best for mounting heat insulation panels and filling voids during adhesive application. Also advised for wooden type construction material bonding to concrete, metal etc. Applications needed minimum expansion. Mounting and isolation for frames of windows and doors.



Scan QR code for product video.



960P

XPS, EPS AND INSULATION PANELS ADHESIVE PU FOAM (Professional)

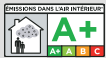
One component aerosol polyurethane adhesive foam curing swiftly with moisture. Providing very fast and powerful adhesion for various construction materials, especially highly recommended for heat insulation systems.

FEATURES

Powerful adhesion of polystyrene heat panels (XPS and EPS). Ready to mechanical fastening in two hours. More economical. Ready to use in aerosol can. Up to 14m² heat insulation panel adhesion for each can. Minimum expansion during drying period. After dried, no further expansion and shrinkage. A lighter material compared to plaster which used in heat insulation systems. No more extra burden or weight to building. Depending on the humidity and temperature. Usable at low temperature like 0°C. It does not contain any propellant gases which are harmful to the ozone layer.

APPLICATION AREAS

Best for mounting heat insulation panels and filling voids during adhesive application. Also advised for wooden type construction material bonding to concrete, metal etc. Applications needed minimum expansion. Mounting and isolation for frames of windows and doors.



Scan QR code for product video.

960C

COMBO ADHESIVE PU FOAM (STRAW & GUN)

One component aerosol polyurethane adhesive foam curing swiftly with moisture. Providing very fast and powerful adhesion for various construction materials, especially highly recommended for heat insulation systems. It can be used with an applicator gun and straw adapter features higher yield, easier application and reusability. It does not contain any propellant gases which are harmful to the ozone layer.

FEATURES

Powerful adhesion to polystyrene heat panels (XPS and EPS), Provides high thermal insulation with excellent adhesion and filling properties, Instant adhesion and wall plugging within two hours, More economical. Ready to use in aerosol can, Economical consumption thanks to precise application with gun and straw adapter, Provides stronger adhesion with straw adapter, Up to 14m² heat insulation panel adhesion for each can with gun use and 9m² for straw use. Minimum expansion during drying period with gun application, After dried, no further expansion and shrinkage, A lighter material compared to mortar, used in heat insulation systems, No more extra burden or weight to building, depending on the humidity and temperature, Usable at low temperatures like 0°C, It does not contain any propellant gases which are harmful to the ozone layer.

APPLICATION AREAS

Best for mounting heat insulation panels and filling voids during adhesive application, Advised for wooden type construction materials adhesion to concrete, metal etc. Applications which needed minimum expansion, Mounting and isolation for frames of windows and doors.



965P ROOF & TILE PU ADHESIVE



One component aerosol polyurethane adhesive foam curing swiftly with moisture and specifically formulated for laying roofing tiles, thanks to its characteristics of greater mechanical strength and adhesion to concrete and brick and insulating materials such as polystyrene and cork.

FEATURES

Powerful adhesion of roofing tiles. Instant adhesion and roof fixing within two hours. Exceptional resistance to wear and to the action of the wind. Not form thermal bridges, thanks to the excellent thermal insulation. Thanks to its modern chemical formulation, it is highly thixotropic. More economical. Ready to use in aerosol can. Up to 14 m2 roofing tile adhesion for each can. Minimum expansion during drying period. After dried, no further expansion and shrinkage. No more extra burden or weight to building. Depending on the humidity and temperature.

APPLICATION AREAS

Used best for laying of tiles and tiles construction of insulation on roof repair and consolidation of roofing. Laying wooden elements and insulation panels for thermal and acoustic insulation purposes. Seals and fittings in general where minimum expansion is needed. Mounting and isolation for frames of windows and doors.



962P CONCRETE STONE & BRICK PU ADHESIVE

Professional type, gun grade, ready to use adhesive foam. Specially designed to bond construction elements like aerated blocks and different kind of bricks.

FEATURES

Bonding structural blocks of non-bearing interior walls. For use where fixed, permanent positioning of stone or concrete products is desired. Concrete pavers/slabs. Segmental retaining walls and columns. Cast stone copings. Landscape blocks and bricks. Polystyrene foam board. Cellular lightweight concrete elements. Ornamental precast. Natural & manufactured stone. Brick, aerated block, cinder block, bims block, gypsum block and gypsum panel bonding. Applications where minimum expansion is needed. Mounting and isolation for frames of windows and doors.

APPLICATION AREAS

One component, fast curing, easy to use adhesive foam. Bonding blocks and stones during construction works. Powerful adhesion to concrete and stone variations. Suitable to use at interior and exterior applications. Remarkable resistance to weather conditions. Doesn't form thermal bridges, thanks to the excellent thermal insulation. More economical, practical and easy to use. Minimum expansion during drying period. After dried, no further expansion or shrinkage. No more extra burden or weight to building. Usable at low temperature like 0°C. It does not contain any propellant gases which are harmful to the ozone layer.



Scan QR code for product video.

966P SUBFLOOR PU ADHESIVE



One-component, premium, polyurethane-based new generation adhesive formulated for floor joists, subflooring, trusses, particle board, OSB and decks. Subfloor Adhesive provides superior adhesion to lumber, plywood, concrete, metals, masonry and other substrates even if they are frozen or slightly damp.

FEATURES

Its revolutionary high yield replaces up to 25 standard 280 ml cartridges of traditional caulk adhesive. Extremely strong bond. Adheres to dry, wet, treated and frozen lumber. Reduces nail pops, call backs and squeaks. Saves application time and money. Provides thermal and sound insulation.

APPLICATION AREAS

Many construction application on lumber, plywood, concrete, metals, masonry, steel, metals, fiberglass and more. Bonding floor joists, subflooring, trusses and other wood floor sheathing.



Scan QR code for product video.



967P FAST ADHESIVE

Fast Curing Adhesive PU Foam is a professional type, gun grade, ready to use product. It is used for fast and strong bonding of all kinds of construction materials, especially thermal insulation boards. Within 60 seconds, initial adhesion occurs and adheres securely after 5 minutes.

FEATURES

One component, fast curing, easy to use adhesive foam. 30-40% saves time, because it can be cured and applied quickly according to other insulating processes. It is 30-40% more economical than other insulation processes. Up to 14 m² heat insulation panel (EPS, XPS) adhesion for each can. Powerful adhesion to polystyrene heat insulating panels (XPS and EPS) and other construction materials. Provides initial adhesion within 60 seconds. It allows the connection of the heat insulating panels within an average of 30 minutes. Suitable to use at interior and exterior applications. Remarkable resistance to weather conditions. Usable at low temperature like -6 °C. It does not contain any propellant gases which are harmful to the ozone layer. Fire class B3 according to DIN 4102-1.

APPLICATION AREAS

Mounting large insulation/finishing boards. Bonding structural blocks of non-bearing interior walls. For use where fixed, permanent positioning of stone or concrete products is desired. Mounting decorative elements. Concrete pavers/slabs. Segmental retaining walls and columns. Cast stone copings. Landscape blocks and bricks. Polystyrene foam boards. Cellular lightweight concrete elements. Ornamental precasts. Natural & manufactured stones. Brick, aerated block, cinder block, bims block, gypsum block and gypsum panel bonding. Applications where minimum expansion is needed.



968P UNIVERSAL WOOD ADHESIVE

A single component, fast curing, polyurethane based special adhesive foam. Provides high bonding strength and fast curing properties. Designed for bonding wooden types, brick, aerated block, stone, natural stone etc. construction elements.

FEATURES

A special product which is transforming with collapsing from foam form to gel adhesive form in a couple of seconds after application. One component, fast curing, easy to use. Extremely high bond strength on wood, concrete and stone variations. Suitable to use at interior and exterior applications. Conforms to D4 according to DIN EN 14257 (WATT 91). According to internally tests. Low press time. Just 15 minutes. Low consumption, economical. Remarkable resistance to weather conditions. More economical, practical and easy to use. Minimum expansion during drying period. Usable at low temperature like +5 °C. It does not contain any propellant gases which are harmful to the ozone layer.

APPLICATION AREAS

To bond wooden types. MDF, Chipboard, Plywood, Laminate, OSB etc. At furniture production, wooden door-window production, wooden construction element bonding and decorative material bonding applications. As a Marine Adhesive, Montage Adhesive and PU Wood Glue. Bonding structural blocks of non-bearing interior walls at construction. For use in construction and repair applications where a permanent strong bond is required between porous-porous and porous-nonporous surfaces. Usable at; Concrete pavers/slabs, Segmental retaining walls and columns, Landscape blocks and bricks, Polystyrene foam board, Cellular lightweight concrete elements, Ornamental precast, Natural & manufactured stone, Brick, aerated block, cinder block, bims block, gypsum block and gypsum panel bonding.



Waterproof

510 NO NAIL PU MONTAGE ADHESIVE

One-component, fast curing polyurethane based adhesive. Thanks to its bonding capability to all common building materials with high bond strength, you will no longer need nail or screw.

FEATURES

Low press time. Extremely high bond strength on various substrates such as wood, MDF, concrete. Fast curing. Good filling properties. Thixotropic, non-sag, ideal for vertical joints. Easy to use. Nonshrinking. Excellent resistance to moisture and weather conditions. Solvent-free. Usable in slightly wet substrates.

APPLICATION AREAS

It is suitable for use in construction and repair applications where a permanent strong bond is required between porous-porous and porous-nonporous surfaces. It can be used for bonding to various kinds of construction materials such as wood, MDF, concrete, metal, polystyrene and polyurethane foam, marble, granite and ceramic etc.





Scan QR code for product video.

610 PU EXPRESS MONTAGE ADHESIVE

One-component, fast curing polyurethane based adhesive. It combines high bond strength with fast curing. It's used to bond almost all common building materials.

FEATURES

Fast curing. Low press time. Transparent. Extremely high bond strength on numerous substrates. Thixotropic, non-sag, ideal for vertical joints. Low consumption, economical. Good filling properties. Conforms to D4 according to DIN EN 204. Easy to use. Very good resistance to chemicals. Excellent resistance to moisture and weather conditions. Nonshrinking. Low odour. Usable in slightly wet substrates.

APPLICATION AREAS

It is suitable for use in construction and repair applications where a permanent strong bond is required between porous-porous and porous-nonporous surfaces. It can be used for bonding to various kinds of construction materials such as wood, MDF, concrete, metal, polystyrene and polyurethane foam, marble, granite and ceramic etc.



612J ALUMINUM CORNER JOINT PU EXPRESS

One-component, fast curing polyurethane based adhesive with high adhesion properties which is exclusively developed for bonding aluminum corner angles, along with all kinds of aluminum materials in building material's corner joint applications.

FEATURES

Perfect bonding capability to aluminum surfaces. Low pressing time. Easy to use both in vertical and horizontal surfaces with non-sag properties. Low consumption, economical. Not effected by the moisture. Resistant to weather conditions and chemicals. For both interior and exterior usage. Also provides good adhesive strength with various substrates.

APPLICATION AREAS

Aluminum brackets, doors and windows. Bonding of aluminum materials to most common substrates like, wood, MDF, concrete, metal, polystyrene and polyurethane foam, PVC, granite, Marble, ceramic. Also can be used for bonding most building materials.



Scan QR code for product video.



480 PEDESTAL ADHESIVE

Single component, polyurethane based adhesive particularly designed for installation of access flooring systems.

FEATURES

Provides excellent green strength, Bonds Metal to Concrete, Suitable for both indoor and outdoor applications, Water resistant when cured, Excellent gap-filling properties, Paste like consistency, One component, no mixing required.

APPLICATION AREAS

Suitable for adhesion of raised access floor pedestals to floors. Suitable on metal, concrete, chipboards, plywood, fiber reinforced gymnasium and cement boards.



Waterproof



495 NO NAIL HIGH INITIAL TACK



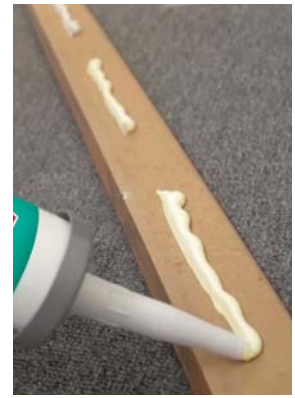
Akfix 495 is a single component, polyurethane based adhesive particularly suitable for the jobs that require high initial tack and green strength.

FEATURES

High Tack. Good wet tack. Provides excellent green strength. Suitable for both indoor and outdoor applications. Thixotropic, non-sag, ideal for vertical joints. Low consumption, economical.

APPLICATION AREAS

Suitable on surfaces such as wood, particleboard, wood, polystyrene foam, concrete, masonry, tile, ceramic, stone, plasterboards. Mounting wooden construction elements, wood and plaster panels, plaster ornaments and decorative wooden trimmings.



"Conforms to the requirements of VOC content specifications in LEED credit EQc4.1 "Low-emitting products" of SCAQMD rule 1168."

Waterproof



PA360 PUR WOOD GLUE

One-component, fast curing liquid polyurethane adhesive. It possesses high water resistance and bonding strength.

FEATURES

Easy application, low viscosity. High bond strength. Water resistant (D4-DIN EN204). Can be used on slightly humid surfaces. Resistant to temperature extremes. Resistant to moisture and chemicals.

APPLICATION AREAS

Fixing and gluing wooden elements to other various porous and non-porous elements as wood, metal, concrete, polystyrene foam etc. Furniture and boat production. All bonding applications that need a high water resistance.



Waterproof

360FC FAST CURE PUR WOOD GLUE

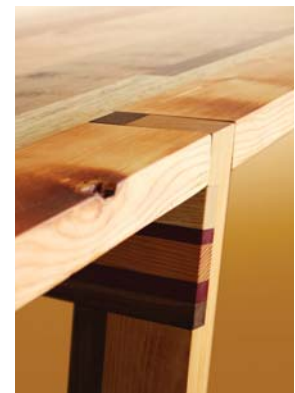
One-component, fast curing liquid polyurethane adhesive. It possesses high water resistance and bonding strength.

FEATURES

Easy application, low viscosity. High bond strength. Fast drying. Water resistant (D4-DIN EN 204). Can be used on slightly humid surfaces. Resistant to temperature extremes. Resistant to moisture and chemicals.

APPLICATION AREAS

Fixing and gluing wooden elements to other various porous and non-porous elements as wood, metal, concrete, polystyrene foam etc. Furniture and boat production. All bonding applications that need a high water resistance.



Waterproof



Scan QR code for product video.

PA370

EXPRESS PU WOOD GLUE (TRANSPARENT)

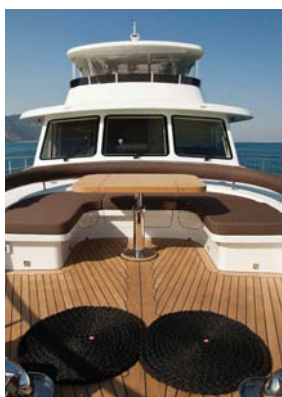
One-component, fast curing liquid polyurethane adhesive. It possesses high water resistance and bonding strength.

FEATURES

Fast curing. Low press time. Transparent. Extremely high bond strength on numerous substrates. Conforms to D4 according to DIN EN 204. Easy to use. Very good resistance to chemicals. Excellent resistance to moisture and weather conditions. Nonshrinking. Low odour. Useable in slightly wet substrates.

APPLICATION AREAS

Fixing and gluing wooden elements to other various porous and non-porous elements as wood, metal, concrete, polystyrene foam etc. Furniture and boat production. All bonding applications that need a high water resistance.



PA380

HEAVY DUTY PUR MARINE ADHESIVE

A one component high viscosity polyurethane based adhesive specially designed to provide marine grade quality for current industry needs. It can be also used in furniture industry DIY projects where you need premium quality. Unlike common polyurethane adhesives, it does not foam up uncontrollably.

FEATURES

Water-resistant and weatherproof. Withstand temperature and seasonal changes and suitable for both interior and exterior applications. Retards fire. Low-foam. High adhesion strength. Suitable for wood based materials, metals, natural stones, ceramic, rubber etc. Can be sanded and painted after curing. High viscosity: Easier to use on vertical surfaces compared to standart liquid adhesives. Long open time: gives sufficient working time.

APPLICATION AREAS

Fixing and gluing wooden elements to other various porous and non-porous elements as wood, metal, concrete, polystyrene foam etc. Furniture and boat production. All bonding applications that need a high water resistance and fire retardant properties.



Waterproof



740

ALLBOND GLUE

A versatile PU based glue that gets activated by the water and expands throughout the materials and reaches even to its tiny details to form an incredibly strong bonding.

FEATURES

Virtually bonds everything. 100% waterproof; outdoor elements are no problem. Temperature resistant; holds through hot and cold temperatures. Incredibly strong bonding; expands into materials to form strong bonding. Low-foaming. Fire Resistant.

APPLICATION AREAS

Easily bonds wood, stone, metal, ceramic, foam, glass, concrete and much more! All bonding applications that requires a high water resistance and fire retardant properties.



Waterproof





PA550 PVC MEMBRANE PRESS ADHESIVE (PU DISPERSION BASED)

New generation adhesive for fixing PVC, PP, PET, ABS onto especially MDF by the vacuum or membrane press process for the manufacture of high gloss furniture in kitchen, bathroom or wardrobe shutters and doors. Membrane Press Adhesives are can be used together with Akfix hardeners creating a cross linked film with high adhesion properties and very good heat and water resistance.

FEATURES

Easy to apply, has a low viscosity. Quick drying. Water resistant. Synthetic and natural materials, excellent bonding. Low and high temperatures do not lose strength. Moisture and chemical resistant. Heat-sensitive film with high adhesion for the low activation temperature. Not harm the environment and human health.

APPLICATION AREAS

Permanent adhesion for durable fixation. Excellent heat resistance to prevent delaminating in hot conditions. Outstanding bonding properties on most synthetic and natural materials. Enabling you to get perfect and smooth surface for high gloss finishes. High initial bond strength and low activation temperature for heat sensitive films.



Waterproof

HM220 EVA HOT MELT STRAIGHT EDGE BANDING ADHESIVE

General purpose synthetic resin and EVA based hotmelt adhesive of thermoplastic characteristic.

FEATURES

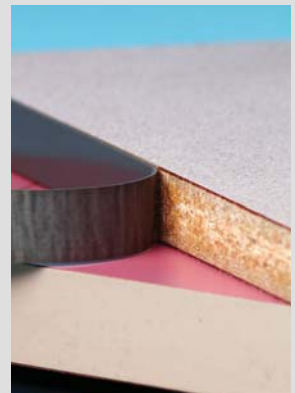
Hot-Melt is used for curved edge banding, coating and massive adhesion operations on all kinds of domestic and foreign edge banding machines, also manually operated machines. It is short open time adhesive. Appropriate when immediate bonding is required. Environmentally friendly. Economical. High green strength. Non-sticky surfaces. Odourless. Easy to use.

APPLICATION AREAS

It is recommended that ambient temperature should be above 15°C, air moisture 65-75% and material moisture 8-10% during application, and the adhesive should spread throughout one side of the object to be adhered.



180°C
200°C



Waterproof

HM226 EVA HOT MELT CURVE EDGE BANDING ADHESIVE

Synthetic resin and EVA based hot melt adhesive of thermoplastic characteristic which is developed specifically for curved edge banding purposes.

FEATURES

Hot-Melt is used for curved edge banding, coating and massive adhesion operations on all kinds of domestic and foreign edge banding machines, also manually operated machines. It is short open time adhesive. Appropriate when immediate bonding is required. Environmentally friendly. Economical. High green strength. Non-sticky surfaces. Odourless. Easy to use.

APPLICATION AREAS

Environment temperature must be around 15°C during the application process. Adhesive must be applied to one surface of the material to be adhered. Air humidity should be 65-75% and product humidity should be 8-10%.



120°C
140°C



HM774 EVA HOT MELT STRAIGHT EDGE BANDING ADHESIVE

Synthetic resin and EVA based hot melt adhesive of thermoplastic characteristic that gives perfect results with straight edge banding works.

FEATURES

Hot-Melt is used for straight edge banding, coating and massive adhesion operations on all kinds of domestic and foreign edge banding machines, also manually operated machines. It is short open time adhesive. Appropriate when immediate bonding is required. Environmentally friendly. Economical. High green strength. Non-sticky surfaces. Odourless. Easy to use.

APPLICATION AREAS

Environment temperature must be around 15°C during the application process. Adhesive must be applied to one surface of the material to be adhered. Air humidity should be 65-75% and product humidity should be 8-10%.



HM788 EVA HOT MELT STRAIGHT EDGE BANDING ADHESIVE

Synthetic resin and EVA based hot melt adhesive of thermoplastic characteristic that gives perfect results with straight edge banding works where lower softening point and fast bonding is needed.

FEATURES

Hot-Melt is used for straight edge banding, coating and massive adhesion operations on all kinds of domestic and foreign edge banding machines, also manually operated machines. It is short open time adhesive. Appropriate when immediate bonding is required. Environmentally friendly. Economical. High green strength. Non-sticky surfaces. Odourless. Easy to use.

APPLICATION AREAS

Environment temperature must be around 15°C during the application process. Adhesive must be applied to one surface of the material to be adhered. Air humidity should be 65-75% and product humidity should be 8-10%.



D2 D2 PVA WHITE GLUE SUPER FRAME WORK

Water based adhesive based on polyvinyl acetate homopolymer emulsion. It is specially formulated to conform to EN 204 (D2).

FEATURES

High bond strength on numerous substrates. Water based. Easy application. Dries transparent.

APPLICATION AREAS

Suitable for bonding wood, decorative laminates, chipboard, blockboard etc. which have limited exposure to high humidity





D3 D3 PVAC SUPER WOOD GLUE

Ready to use water resistant wood adhesive based on polyvinyl acetate homopolymer emulsion. It is specially formulated to conform to EN 204 (D3).

FEATURES

Conforms to D3 according to DIN EN 204. Excellent bond strength on hard, and soft woods. Water based. Easy application

APPLICATION AREAS

Suitable for gluing all types of wood, wooden materials and flat laminates. Wood to wood, soft- and hardboard, synthetic resin board and chipboard. Suitable for fixing paper, cardboard, paper or textile-backed PVC cloth to wood and board. May also be used to bond outdoor timber constructions such as window-frames and external doors. Particularly suitable for moisture-resistant bonds which have to fulfil high demands.



C900 CHEMICAL ANCHOR POLYESTER

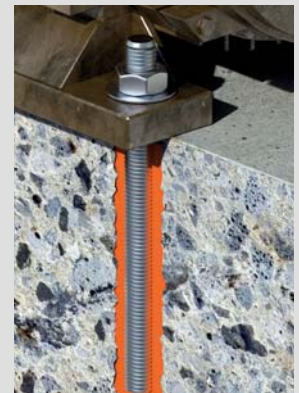
Polyester injection mortar for general purpose for solid and hollow supports having a short cure time. It is suitable for use in concrete, perforated bricks and cavity blocks in a wide range of applications.

FEATURES

Suitable for solid and hollow structures. High solid content. Easy to extrude and to inject. Thixotropic, can be applied in vertical and horizontal direction. Fast curing.

APPLICATION AREAS

Suitable for gluing all types of wood, wooden materials and flat laminates. Wood to wood, soft- and hardboard, synthetic resin board and chipboard. Suitable for fixing paper, cardboard, paper or textile-backed PVC cloth to wood and board. May also be used to bond outdoor timber constructions such as window-frames and external doors. Particularly suitable for moisture-resistant bonds which have to fulfil high demands.



C920 CHEMICAL ANCHOR EPOXY ACRYLATE STYRENE FREE

High performance styrene free epoxy acrylate injection mortar for solid and hollow supports having a short cure time. It is suitable for use in concrete, stone, perforated bricks and cavity blocks in a wide range of applications.

FEATURES

Suitable for rods and reinforcing bars in plain and hollow structures. Styrene free and very low odour. Easy to extrude and to inject. Thixotropic, can be applied in vertical and horizontal direction.

APPLICATION AREAS

Heavy load-carrying attachments in solid stone and concrete. Repair mortar or adhesive mortar for concrete components. Attachment of anchor rods, threaded collars, reinforcement bars, profiles etc. Medium-load applications in hollow-bricks. Fixing of; Wooden constructions, metal constructions, metal profiles, sanitary fittings, pipe connections, projecting roofs, facades, cable trays, railings, staircases, gates, window elements.





C950

CHEMICAL ANCHOR PURE EPOXY

Heavy duty epoxy injection mortar for solid base materials. It works in dry, damp and flooded holes with a fast curing time.

FEATURES

Works in damp and flooded holes. No shrinkage, can be used in oversized holes. Suitable for reinforcing bars in plain structures. Styrene free, very low odour. Thixotropic, can be applied in both vertical and horizontal directions. Fast curing

APPLICATION AREAS

Heavy load-carrying attachments in solid stone and concrete. Repair mortar or adhesive mortar for concrete components. Attachment of anchor rods, threaded collars, reinforcement bars, profiles etc. Medium-load applications in hollow-bricks.

- Fixing of;
- Wooden constructions - Metal constructions - Metal profiles - Sanitary fittings - Pipe connections - Projecting roofs - Facades - Cable trays - Railings - Staircases - Gates - Window elements



308

ACRYLIC MONTAGE ADHESIVE (INSTANT GRAB)

Akfix 308 is a water-based adhesive used for bonding numerous building materials. It is particularly suitable for DIY users due to solvent-free content and high bonding strength.

FEATURES

Acrylic dispersion based. Good gap-filling capacity on rough surfaces. Suitable for both indoor and outdoor applications. Weatherproof. Over paintable. Low odour. Solvent-free.

APPLICATION AREAS

Bonding materials such as wood, non-polished stones, concrete, plaster, tiles, panels, synthetic building materials etc. Mounting wooden construction elements, wood and plaster panels, plaster ornaments. Mounting decorative wooden trimmings. Repairing cracks in plaster. Quick repairs on walls and plaster. Suitable surfaces: MDF, Particleboard, Wood, Polystyrene foam, Concrete, Masonry, Tile, Ceramic, Stone, Plasterboard.



310

MONTAGE ADHESIVE WATER BASED PAINTABLE

Water-based adhesive used for bonding numerous building materials. It is particularly suitable for DIY users due to solvent-free content and high bonding strength.

FEATURES

Acrylic dispersion based. Good gap-filling capacity on rough surfaces. Suitable for both indoor and outdoor applications. Weatherproof. Paintable. Low odour. Solvent-free.

APPLICATION AREAS

Bonding materials such as wood, non-polished stones, concrete, plaster, tiles, panels, synthetic building materials etc. Mounting wooden construction elements, wood and plaster panels, plaster ornaments. Mounting decorative wooden trimmings. Repairing cracks in plaster. Quick repairs on walls and plaster. Suitable surfaces: MDF, particleboard, wood, polystyrene foam, concrete, masonry, tile, ceramic, stone, plasterboard.



ECO Friendly

Scan QR code for product video.



312P PANEL ADHESIVE (XPS, EPS, and Plaster Board) WATER BASED PAINTABLE

Panel adhesive is an acrylic based adhesive with high initial strength designed for the mounting of the xps, eps, plaster boards and light weight decoration materials.

FEATURES

High initial power. Both vertical and horizontal application. Waterborne. No odor & solvent. Paintable.

APPLICATION AREAS

Installation of the xps, eps, plaster board, polystyrene and decorative panels on various building materials. Bonding of wooden structural elements. The installation of moldings, paneling, baseboards and drywall material. Bonding of tiles, bricks, foam, felt and similar materials.



320C CORNICIE ADHESIVE

A Premium formula, with excellent initial adhesion strength that is utilized in assembly of the polystyrene cornice sheets. Also provides good performance with plasterboards and decoration materials.

FEATURES

Initial adhesion ability of 120 kg/m², Both vertical and horizontal application, Good gap-filling capacity on rough surfaces, Waterborne, No odor & solvent, Paintable.

APPLICATION AREAS

For assembly of the polystyrene decorative cornices and panels, Suitable for the substrates such as ceramic tiles, bricks, foams, felts etc. For the adhesion of plasterboards and ornamental materials, For the adhesion of the wooden construction elements.



900N NEUTRAL MIRROR ADHESIVE

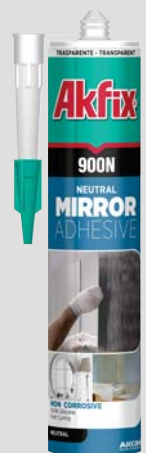
High performance neutral cure silicone which is particularly designed for bonding the mirrors in all kinds and sizes without harming the mirror. A bonded mirror is safer because there is no risk of large pieces of glass falling in the event of breakage.

FEATURES

Highly elastic, +/-25% movement capability. Excellent primerless adhesion to numerous porous and non-porous substrates. Safer mirror construction with non-corrosive properties. Permanently elastic. Fast curing. 100% Silicone, solventless. Solvent free, very low odor. Adjustable, easy to apply. High viscosity non slump formula. One component moisture-cured. Excellent tooling propertie. Resistant to temperature extremes (-60 °C to +180 °C).

APPLICATION AREAS

For fixing and bonding of mirrors in some places such as fitness centers, restaurants, cafes, hotels, and offices where mirror wall is required. For glazing works. Sealing applications where a low odor is required.



705

UNIVERSAL FAST ADHESIVE

An adhesive set which consists of high viscosity cyanoacrylate adhesive and activator.

FEATURES

High bonding strength. Suitable for use on vertical surfaces as it will not drip or slump. It is particularly suited to bonding difficult substrates which have a porous or uneven nature since it increases bonding strength by preventing the adhesive to be absorbed by the surface.

APPLICATION AREAS

It is suitable for the bonding of a very wide range of materials, including acidic surfaces (thanks to activator) and some porous ones, where rapid bonding times are required. Suitable for MDF, wood, chip wood, rubber, most plastics, leather and other common substrates. Especially suitable for the applications where cure speed needs to be accelerated. Although Akfix 705 has a degree of gap filling ability, it is generally recommended for use on close-fitting parts and fairly smooth, even surfaces.



www.akfix.com/fastadhesive



702LV

SUPER GLUE CYANOACRYLATE (20 Cps)

Low viscosity superfast instant glue based on cyanoacrylate adhesive. It is excellent where extremely fast cure is required.

FEATURES

Immediate bond. Very high bond strength after a few seconds.

Twist Cap:

Unlike normal bottle which uses a needle or a pin on the cap to prevent clogging, the Non-Clogging bottle has a special designed top which hides the cap inside the bottle.

APPLICATION AREAS

Suitable for rubber, metals, porcelain, rubber, leather, wood, paper ceramic and many plastics.



702HV

SUPER GLUE CYANOACRYLATE (100 Cps)

High viscosity superfast instant glue based on cyanoacrylate adhesive. It is excellent where extremely fast cure is required.

FEATURES

Immediate bond. Very high bond strength after a few seconds.

APPLICATION AREAS

Suitable for rubber, metals, porcelain, rubber, leather, wood, paper ceramic and many plastics.





ECO Friendly

702 SUPER GLUE CYANOACRYLATE

Low viscosity superfast instant glue based on cyanoacrylate adhesive. It is excellent where extremely fast cure is required.

FEATURES

Immediate bond. Very high bond strength after a few seconds.

APPLICATION AREAS

Suitable for rubber, metals, porcelain, rubber, leather, wood, paper ceramic and many plastics.



Precise Control



Flexible Tube



Standing Tube

303 SUPER GLUE CYANOACRYLATE

Low viscosity super fast instant glue based on cyanoacrylate adhesive. It is excellent where extremely fast cure is required.

FEATURES

Immediate bond. Very high bond strength after a few seconds.

APPLICATION AREAS

Suitable for rubber, metals, ceramic and many plastics.



Scan QR code for product video.



202 UNIVERSAL CONTACT ADHESIVE (TOLUENE FREE)

Fast curing, high strength adhesive based on chloroprene rubber.

FEATURES

Rapid curing. Provides flexible bond. Good frost resistance. Moisture resistant.

APPLICATION AREAS

It is mainly used in upholstery, shoe and textile industry for bonding of the most common materials such as; Rubber, fabric, leather, artificial leather, cork, metal, chipboard etc. to itself or to several other substrates.



Frost Resistant



Frost Resistant

204

UNIVERSAL CONTACT ADHESIVE

Fast curing, high strength adhesive based on chloroprene rubber.

FEATURES

Rapid curing. Provides flexible bond. Good frost resistance. Moisture resistant.

APPLICATION AREAS

It is mainly used in upholstery, shoe and textile industry for bonding of the most common materials such as; Rubber, fabric, leather, artificial leather, cork, metal, chipboard etc. to itself or to several other substrates.



HM208

HOT MELT STICK

Translucent, high viscosity and slow setting general purpose glue stick.

FEATURES

Designed for use on the paper, cloth and plastic related applications. Ideal for bonding wood, metal, fabric, ceramics, masonry, leather, cardboard. Appropriate when immediate bonding is required. Environmentally friendly. Gap-filling. High green strength. Non-sticky surfaces. Odourless. Easy to use.

APPLICATION AREAS

Ideal for household repairs, DIY tasks, craft and hobby works.



8 mm

11 mm



Scan QR code for product video.

RT238

RETAINING HIGH STRENGTH

Akfix RT238 is a single component, resin based, high viscosity, high strength product used for strengthening mechanical connections.

FEATURES

- Can be used on all kinds of rough surfaces.
- Fills gaps in worn out joints
- Fits bearings, prevents the dislocation.
- Fills smallest gaps due to its low viscosity and is used in sensitive fittings.
- Fits impellers and shafts together.
- Locks linings and boots to their beds and on the shaft.



PS252

PIPE SEALANT HIGH STRENGTH

Akfix PS252 is a low-medium viscosity and high strength anaerobic pipe sealant. Thixotropic formulation reduces run-off and migration of the product before assembly.

FEATURES

- It can be easily applied to threaded joints and removed easily with hand tools.
- With its specialized formulation, PS252 can be used applications where high pressure proof or oil resistance is required.
- Especially suitable for H-thick metal threaded joints according to EN 751-1 standard.
- The product resists high temperatures with maintaining high strength.



PS253 PIPE SEALANT MEDIUM STRENGTH



Akfix PS253 is a medium viscosity and medium strength anaerobic pipe sealant. Thixotropic formulation reduces run-off and migration of the product before assembly.

FEATURES

- It can be easily applied to threaded joints and removed easily with hand tools.
- With its specialized formulation, PS253 can be used applications where high pressure proof or oil resistance is required.
- The product resists very high temperatures after full curing.

HP242 PIPE SEALANT (HIGH PRESSURE)



Akfix HP242 is an easily applied anaerobic low viscosity pipe sealant used in hydraulic & pneumatic fittings with diameters up to 50 mm and servomechanisms.

FEATURES

- Does not shrink when fully cured.
- Shows great resistance to high pressure, vibration, solvents, heat up to 150°C, moisture, and corrosion.
- Easily applied to hydraulic & pneumatic fittings with diameters up to 50 mm and servomechanisms.

PS257 PIPE SEALANT (WITH TEFLON)



Akfix PS257 is a high viscosity and medium strength anaerobic pipe sealant. Thixotropic formulation reduces run-off and migration of the product before assembly.

FEATURES

- It can be easily applied to threaded joints and removed easily with hand tools.
- With its specialized formulation, PS257 can be used applications where high pressure proof or oil resistance is required.
- The product resists very high temperatures after full curing.
- Especially suitable for H-thick metal threaded joints according to EN 751-1 standard.
- The product fills high distance gaps and gives perfect results on wide-diameter (wider than 0.5mm) applications.

L222 THREADLOCKER (LOW STRENGTH)



Akfix L222 is a low-strength, easy to remove screw lock. Works on all metals, especially good on low strength metals which could damage during disassembly, e.g. brass or aluminium.

FEATURES

- Ideal for low-strength thread-locking of adjusting screws.
- Easy to remove screw lock.
- Especially good on low strength metals which could damage during disassembly, e.g. brass or aluminium.

L243 THREADLOCKER (MEDIUM STRENGTH)



Akfix L243 is a medium strength thixotropic anaerobic thread locker. The product cures when confined in the absence of air between close-fitting metal surfaces.

FEATURES

- Formulated to lock all metric and imperial nuts and bolts
- Prevents vibration loosening and leakage through the threads
- Slightly oil tolerant; it will bond some 'as received' parts, but best results are obtained with clean substrates.
- The thixotropic nature of the product prevents run off, dripping and migration after assembly.
- Typically used on mounting bolts, housing screws, etc.
- Prevents corrosion of assembled parts.

L270 THREADLOCKER (HIGH STRENGTH)



Akfix L270 is a single component, high strength (permanent) anaerobic thread locker. The product cures when confined in the absence of air between close-fitting metal surfaces.

FEATURES

- Formulated to lock metal fasteners;
- Particularly suitable for larger threaded fasteners, e.g. studs and all applications where maximum strength is needed.
- Prevents corrosion of assembled parts.



R305 PVC CEMENT

Adhesive containing stabilized Tetrahydrofurane is suitable for joints, resistant to shear strain of pressure pipes (e. g. drinking water and gas pipes) with uPVC fittings, and gluing cable conduits, drain pipes etc in accordance with the recommendations of the Plastic Pipe Association.

FEATURES

High pressure resistance (16 bars). Water resistant. Chemical resistant especially to inorganic acids. Fast curing, maximum leak protection. Excellent gap-filling properties. Easy bonding even on large surfaces. Hot and cold water pipes (60°C). Resistant to bacteria. The products conforms to following standards. DIN 16970. BS 4346. ASTM-D 2564. NEN 7106

APPLICATION AREAS

Specifically indicated for: Bonding cement uPVC pipes and accessories in pressure systems up to 16 PN. Bonding pipes and accessories in waste systems according to the following: PVC-U plastics piping systems for soil and waste discharge (low and high temperature). ABS plastics piping systems for soil and waste discharge (low and high temperature). PVC-C plastics piping systems for soil and waste discharge (low and high temperature).



R306 PVC CEMENT (THF FREE)

Special solvent cement for joining rigid PVC pipes and accessories pressure systems, according to BS EN 14814 and BS EN 14680. Specifically indicated to bond thermoplastic piping systems that conform to BS EN 1452, BS EN 1455, BS EN 1566 and BS EN 1329. Adhesive with CE Marking for thermoplastic piping systems for fluids under pressure (PN16). Designed also to be used in non pressure systems such as PVC and ABS.

FEATURES

Very high initial forging speed. High resin content gives a good filling capacity in diametrical gaps. THF free. Gel consistency and excellent fluidity. High thixotropic index - prevents it from dripping upon application. Acts as a real chemical welding system for PVC, due to its composition. Easy to apply; it does not run or form "tears" inside the fixed pipes. The fixed joints present resistance and ageing characteristics comparable to those of cement PVC. Complies with requirements of the standard BS-EN14680 and BS-EN14814.

APPLICATION AREAS

Specifically indicated for:
Bonding cement PVC-U pipes and accessories in pressure systems up to 16 PN according to BS EN 14814 "Adhesives for thermoplastic piping systems for fluids under pressure. Specifications". Specifically indicated to bond thermoplastic piping systems that conform to BS EN 1452 and BS EN 1329. Bonding pipes and accessories in waste systems according to the following standards:
PVC-U plastics piping systems for soil and waste discharge (low and high temperature) BS EN 1329.
ABS plastics piping systems for soil and waste discharge (low and high temperature) BS EN 1455.
PVC-C plastics piping systems for soil and waste discharge (low and high temperature) BS EN 1566.



Scan QR code for product video.



G400 GRANITE AND MARBLE ADHESIVE

Two component polyester resin mastic for bonding and filling of marble, granite and natural stone.

FEATURES

Fast drying properties. Available in liquid and solid form. Resistant to alkalis and diluted acid solutions. Temperature resistance of cured adhesive is between -10 °C and +100°C. Bonded surfaces are ready to be used after 2 hours. No color change, cracking or shrinkage during hardening period. Become hard and perfectly polishable after drying.

APPLICATION AREAS

Bonding of natural stones like marble, travertine etc. Bonding of concrete, granite, wood surfaces.



Scan QR code for product video.



G500 GRANITE AND MARBLE ADHESIVE LIQUID

Polyester based, two component liquid adhesive, used for filling and bonding of marble, granite, natural stone, artificial marble, onyx and ceramic like materials.

FEATURES

Fast curing (2-3 minutes at 20°C). Easy to process with its creamy consistency. Perfect shine after mechanical polishing. High chemical resistance. Excellent resistance against wearing. High bonding power even in high temperatures.

APPLICATION AREAS

Bonding of natural stones like marble, travertine, artificial marble, onyx etc.



710 STONE & MARBLE FAST ADHESIVE

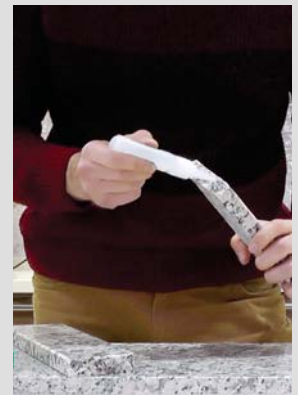
High viscosity cyanoacrylate and activator, which is developed especially for bonding materials such as natural stone, marble, granite and decorative stones.

FEATURES

Ability to bond rapidly in seconds. High bonding power. Thanks to its high viscosity formula, it can be used in vertical places without pour and splash. Activator makes it possible and incredibly fast to bond even porous surfaces.

APPLICATION AREAS

Utilized in assembly and repairs of parts such as natural stone, marble, granite, wood, MDF and metal. Preferred especially in the applications which require rapid curing.



Scan QR code for product video.

E300 WATERPROOF EPOXY

Fast cure two-component waterproof epoxy adhesive.

FEATURES

High lap shear strength and durability. Applied and cured under water. Cures without shrinkage and crack. Good gap filling capability. Water and chemical resistant. Paintable and sandable,

APPLICATION AREAS

Bonding for wood, glass, crystal, ceramic, porcelain, metal, fiberglass. Repairing furniture and household materials.





E340 QUICK SETTING EPOXY

Fast cure two-component adhesive based on epoxy.

FEATURES

High lap shear strength and durability. Very fast cure. Cures without shrinkage and crack. Good gap filling capability. Water and chemical resistant. Paintable and sandable,

APPLICATION AREAS

Bonding for wood, glass, crystal, ceramic, porcelain, marble metal, fiberglass, leather, rubber, fabric and rigid plastic substrates. Sealing electrical components. Repairing furniture and house materials.



E350 STEEL EPOXY & QUICK FIX PUTTY

STEEL

Versatile, highly durable and very strong epoxy adhesive. Easy to apply, fast cure and excellent adhesion strength in 5 minutes. Because of its gap filling capability, it can also be used on rough and incompatible surfaces.

FEATURES

Very fast cure. Cures without shrinkage and crack. Good gap filling capability. Machinable. Water and chemical resistant. Paintable and sandable.

APPLICATION AREAS

Bonding for metal, concrete, wood, glass and ceramic. Use for repairing machinery, appliances, tools, automotive components, pipes. Imbedding bolts and screws into metals, concrete or stone. Sealing electrical components,

QUICK

Very fast and strong repair putty. It takes the shape of applied surface and material. It can be applied underwater. It works best on metals, wood, glass, masonry, stone, marble and ceramics.

Quick and easy to use-cut, knead and apply. No waste: only use as much as you need. Can be machined, drilled, tapped, sanded and painted after cure. Can be used on vertical substrates, no sagging. No shrinkage and cracking. Excellent resistance to hydrocarbons, and saline water, oil, solvents, mild acids and alkalies.

It is used to bond and fill cracks on all kinds of metal, masonry, brick, wood, glass, ceramic, fiberglass, stone and marble substrates. It is useful for strong repairs in industries, workshops, appliances, tools, marine, automotive parts, metal joints, construction, pools and cracks in concrete. It is used to seal leaks in pipes, tanks and ductworks and underwater repairing.



Scan QR code for product video.

WA400 WALLPAPER & BORDURE ADHESIVE UNIVERSAL

Is a wallpaper adhesive based on cold water dispersible starch and cellulose derivatives.

FEATURES

Easy to apply. Allows time for positioning. Makes future removal quick and easy. Dissolves in water with ease. Can be cleaned with a sponge and water.

APPLICATION AREAS

Sticking wallpapers, pre-pasted borders, posters, placards etc.



WA500 HEAVY DUTY WALLPAPER ADHESIVE PREMIUM

Premium wallpaper adhesive which is based on cold water dispersible starch derivative.



FEATURES

Easy to apply. Thanks to quick dissolving adhesive, viscosity rise quickly. Allows time for positioning. Makes future removal quick and easy. Dissolves in water with ease. Can be cleaned with a sponge and water. Contains anti-fungal & bacterial protection.

APPLICATION AREAS

Suitable for hanging most common types of wallcoverings including paper backed, vinyl coated, textured, embossed etc."



HB260 HYBRID FLOORING ADHESIVE (WOOD & PVC)

Single component universal elastic flooring adhesive based on hybrid technology. Thanks to hybrid technology it is solvent, isocyanate and water free. It provides exceptional performance on strips and mosaic parquet, plank floors and wood block floors on porous and non-porous substrates.

FEATURES

Ready to use: No mixing required. Provides high quality indoor air; Non-toxic, Eco-friendly. Form stable peaks when applied by a notched trowel. Suitable for under-floor heating systems. Permanently flexible. Rapid buildup of final bonding strength. Solvent, Isocyanate and water free. Very easy to apply.

APPLICATION AREAS

Suitable for bonding many different types of floors including strips and mosaic parquet, plank floors and wood block floors on porous and non-porous substrates.



Scan QR code for product video.



HB262 HYBRID WOOD FLOORING ADHESIVE

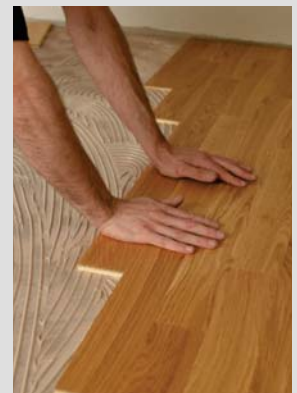
single component universal elastic flooring adhesive based on hybrid technology. Thanks to hybrid technology it is solvent, isocyanate and water free. It provides high performance on strips and mosaic parquet, plank floors and wood block floors on porous and non-porous substrates.

FEATURES

Ready to use: No mixing required. Cost effective. Non-toxic, eco-friendly. Form stable peaks when applied by a notched trowel. Suitable for under-floor heating systems. High bonding strength. Solvent, Isocyanate and water free. Very easy to apply.

APPLICATION AREAS

Suitable for bonding many different types of floors including strips and mosaic parquet, plank floors and wood block floors on porous and non-porous substrates.





FL205 PVC FLOORING ADHESIVE

Akfix FL205 PVC Flooring Adhesive is a one part, water borne acrylic based adhesive that is used for adhesion of PVC/Vinyl floorings and tiles, heterogeneous PVC, expanded vinyl, semi-flexible floor tiles and felt-backed carpets to the floor.

FEATURES

Single component, no mixing required. Solvent-free, very low emissions. Easy to apply. Long open time. Strong initial adhesion power. Stable and elastic adhesive. Suitable for use of wheelchair and rubber-wheeled vehicle traffic. Suitable for installation on under-floor heating systems.

APPLICATION AREAS

Concrete, sand/cement screeds. Smoothened sub-floors. Subfloors composed of wood materials. For Interior use only. Use only horizontal surface.



PU ADH 315 RUBBER TILE AND PARQUET ADHESIVE

Two component, solventless, polyurethane based rubber tile and parquet adhesive. It is specially designed for rubber tile and wood bonding to concrete surfaces. It is resistant to salt water and most chemicals. Easy applicable, durable and elastic adhesive for various substrates.

FEATURES

Two component. Excellent bonding to applied surfaces. Suitable for use in adverse weather conditions. Solvent free. No smell. Flexible. Durable.

APPLICATION AREAS

Bonding all types of parquets. Bonding artificial grass sports ground applications. Bonding rubber sheets to different surfaces such as; concrete, hardboard, chipboard. Bonding metal, ceramic, concrete, wood etc.



PU ADH 325 ARTIFICIAL GRASS ADHESIVE

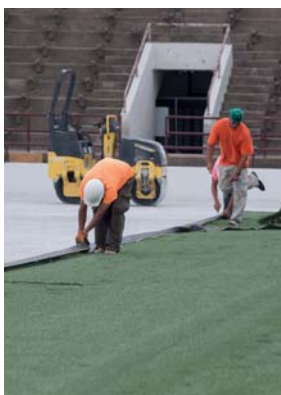
Two component, solventless, self leveling, polyurethane based adhesive designed for installation of artificial grass. It is resistant to water, moisture and corrosive materials. Suitable for use in adverse weather conditions.

FEATURES

Two component. Excellent bonding to applied surfaces. Suitable for use in adverse weather conditions. Solvent free. No smell. Flexible. Durable.

APPLICATION AREAS

Bonding artificial grass sports ground applications. Bonding rubber sheets to different surfaces such as; concrete, hardboard, chipboard. Bonding metal, ceramic, concrete, wood etc.



PU ADH 305 **RUBBER TILE AND PARQUET ADHESIVE**

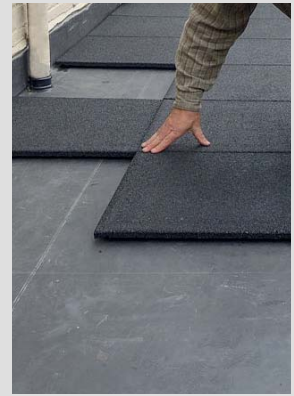
Two component, solventless, polyurethane based rubber tile and parquet adhesive. It is specially designed for rubber tile and wood bonding to concrete surfaces. It is resistant to salt water and most chemicals. Easy applicable, durable and elastic adhesive for various substrates.

FEATURES

Two component. Excellent bonding to applied surfaces. Suitable for use in adverse weather conditions. Solvent free. No smell. Flexible. Durable.

APPLICATION AREAS

Bonding all types of parquets. Bonding artificial grass sports ground applications. Bonding rubber sheets to different surfaces such as; concrete, hardboard, chipboard. Bonding metal, ceramic, concrete, wood etc.



BINDER PU RB 205 **STANDARD PRESS**

One component, polyurethane binder which cures by reaction with atmospheric moisture. It is 100% solids, low viscosity and produces a elastic membrane with excellent adhesion to recycled rubber granules. This is our fast curing speed binder which is primarily used in press system applications.

FEATURES

One component. Excellent adhesion on rubber granules. Flexible. Durable. Solvent free.

APPLICATION AREAS

Parks. Children's playgrounds. School playgrounds. Sport facilities. Outdoor recreation areas. Synthetic surfaces. Rubber floor and doormat. Sound vibration required surfaces.



BINDER PU RB 102 **POUR IN PLACE**

One component, UV stability enhanced polyurethane binder which cures by reaction with atmospheric moisture. It is 100% solids, low viscosity and produces a elastic membrane with excellent adhesion to recycled rubber granules. This is our slow curing speed binder which is primarily used in pour in place applications where humidity is in the 50%- 80% and temperatures is in the 20-35 °C.

FEATURES

One component. Excellent adhesion on rubber granules. Enhanced UV stability. Flexible. Durable. Moisture cure. Solvent free.

APPLICATION AREAS

Parks. Children and school playgrounds. Running tracks and walkways. Sport facilities. Outdoor recreation areas. Synthetic surfaces.





PU BINDER 303

One component, solvent free, aromatic polyurethane binder. It is a moisture curing binder for binding of stones and mineral aggregates to form self-draining flooring. AKFIX PU BINDER 303 formulated to be used indoors or outdoors applications as stone carpet.

FEATURES

Excellent adhesion on stone and aggregates. Easy to apply. Low odour. Moisture cure. Solvent free.

APPLICATION AREAS

Binder for quartz and stone carpet floors. Hotel and Shopping Center. Flooring for courtyards, driveways and pavements. Warehouses and showrooms.



PU BINDER 503

POUR IN PLACE

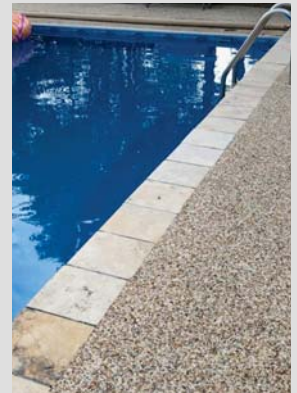
One component, solvent free, transparent aliphatic polyurethane binder. It is a moisture curing binder for binding of stones and mineral aggregates to form self-draining flooring. AKFIX PU BINDER 503 formulated to be used indoors or outdoors applications as stone carpet.

FEATURES

Excellent adhesion on stone and aggregates. Solvent free. UV stable. Easy to apply. Low odour. Moisture cure. Solvent free.

APPLICATION AREAS

Binder for quartz and stone carpet floors. Decorative coatings in external areas, such as terraces and balconies. Hotel and Shopping Center. Flooring for courtyards, driveways and pavements. Warehouses and showrooms.





EXCELLENT
BONDING & SEALING
VERY GOOD
UV RESISTANCE
NO SHRINKAGE
PAINTABLE
ECO FRIENDLY



Sealant Products

www.Akfix.com



Creates Permanent Solutions

SELF LEVELING HYBRID SEALANT



One-component self-leveling, silane modified polymer based sealant ideal for horizontal applications. Its elasticity allows it to absorb continual movements of the structure caused by thermal changes without problems of cracking.

FEATURES

One component, no mixing required. Self-leveling consistency, easily fills the cracks on the floor. Waterproof. Possesses permanent elasticity. High adhesion strength. Capable of ±20% joint movement. Paintable. Cures bubble-free. VOC-compliant.

APPLICATION AREAS

Used for sealing of horizontal joints. Waterproofing applications. Interior and exterior areas. Expansion joints between many different construction materials. Control joints. Driveways/Garages. Sidewalks. Pool decks.



CLEAR AST POLYMER



Crystal clear elastic adhesive/sealant based on AST polymer.

FEATURES

Clear, transparent color. Highly thixotropic: Suitable for horizontal and vertical application. Eco-friendly, free from isocyanate, solvent, acids and halogens. Excellent primerless adhesion to numerous porous and non-porous substrates. No bubble formation, even in wet and humid conditions. Over-paintable with water based paints. No shrinkage.

APPLICATION AREAS

It has a good adhesive strength without primer on most common materials such as aluminum, zinc, galvanized steel, stainless steel, copper, natural stone, concrete, brick, etc. Common application areas are: Transparent and elastic bonding in construction and building applications. Invisible bonding and sealing of glass and other transparent materials in indoor applications



Scan QR code for product video.

"Conforms to the requirements of VOC content specifications in LEED credit EQc4.1 "Low-emitting products" of SCAQMD rule 1168."

SHORE A35 ALL MATERIALS & ALL SURFACES

FLEXI AST POLYMER



Neutral, highly elastic, one component AST based joint sealant. It is a low modulus sealant suitable for both indoor and outdoor applications

FEATURES

Highly thixotropic: Suitable for horizontal and vertical joints. Low modulus can withstand extreme joint movement. Eco-friendly, free from isocyanate, solvent, acids and halogens. Excellent primerless adhesion to numerous porous and non-porous substrates. No bubble formation, even in wet and humid conditions. Very good UV resistance. Over-paintable with water based paints. No shrinkage.

APPLICATION AREAS

Expansion and connection joints in the building industry. Sealing of joints in prefabricated buildings. Movement joints in high rise constructions. Sealing between window and door frames. Where joints have to be painted.



"Conforms to the requirements of VOC content specifications in LEED credit EQc4.1 "Low-emitting products" of SCAQMD rule 1168."

SHORE A25 ALL MATERIALS & ALL SURFACES

UNIVERSAL AST POLYMER



High quality universal hybrid sealant & adhesive based on AST polymer.

FEATURES

Highly thixotropic: Suitable for horizontal and vertical joints. Eco-friendly, free from isocyanate, solvent, acids and halogens. Excellent primerless adhesion to numerous porous and non-porous substrates. No bubble formation, even in wet and humid conditions. Very good UV resistance. Over-paintable with water based paints. No shrinkage.

APPLICATION AREAS

Connection joints in sheet metal fabrication, sealing of HVAC systems. Elastic bonding in vibrating construction elements. Sealing of floor joints and low movement wall joints. Sealing joints in containers, cisterns, silos etc.



SHORE A45

ALL MATERIALS & ALL SURFACES

"Conforms to the requirements of VOC content specifications in LEED credit EQc4.1 "Low-emitting products" of SCAQMD rule 1168."



MULTI SEAL AST POLYMER



Multiseal Modified PU sealant is a universal grade, general purpose all-weather sealant. Multiseal Modified PU combines the properties of both silicone and the polyurethane that makes it an optimum choice for a variety of substrates including: Aluminum, Granite, Ceramics, Marble, Porcelain, Metals, PVC, Glass, Wood, Porous Surfaces (Concrete, Brick, Limestone, etc.).

FEATURES

Does not contain solvent, silicone or isocyanate, Very Low VOC content, No bubble formation, even in wet and humid conditions, Very good UV resistance. Over-paintable with water based paints, No shrinkage. Does not cause oil stains in panels and porous material. Non-sag, very easy to apply. No surface tackiness.

APPLICATION AREAS

Sealing and Bonding applications in; Window and Door Perimeter. General sealing and waterproofing. Roofing and gutter. Concrete joints. Metal building construction. HVAC



ALL MATERIALS & ALL SURFACES

TEAK DECK CAULK AST POLYMER



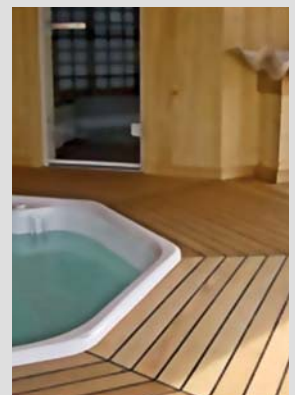
AST Deck Caulk is a one component, non-corrosive, high quality fast curing premium AST polymer sealant designed for marine applications where UV, extreme weather resistance and waterproof properties are required. It is specially developed for waterproof sealing of teak wood decks applications.

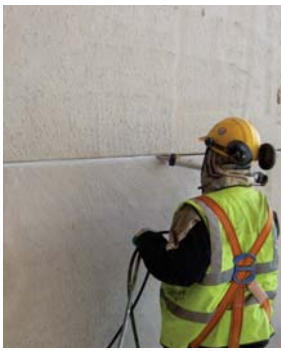
FEATURES

Chemically resistant to diluted acids. UV, ageing, moisture and extreme weather resistance. Eco-friendly, free from isocyanate, solvent, acids and halogens. Highly elastic in low and high temperatures. Excellent primerless adhesion to numerous porous and non-porous substrates. Sandable after curing. Fast curing, low odor and non-sag properties.

APPLICATION AREAS

AST Teak Deck is designed for sealing of connection joints between teak decks and variety of decking substrates. Outstanding primerless adhesion on joining elements made from wood, concrete, plastic, steel, aluminum, zinc, copper, porcelain, ceramics, PVC, metals, polyester, polycarbonate, natural stone, marble, mirror, glass and porous surfaces. If using for the first time a preliminary test is recommended for plastics before application.





SHORE A25

Conforms to BS 6920 for the metallic water soluble impurities and is suitable for use in drinking water systems.



P625 POLYURETHANE SEALANT CONSTRUCTION

One-component, low-modulus polyurethane sealant that cures on exposure to atmospheric humidity. It possesses excellent adhesion to all typical construction materials such as cement based materials, brick, ceramic, glass, wood, galvanized and painted sheet iron and various plastics.

FEATURES

Possesses permanent elasticity. No sagging - Thixotropic. No surface tackiness after full cure. Do not pick up dirt. No shrinkage. Enhanced storage stability. Can be applied with hand gun and tooled easily. Paintable. Cures bubble-free. 25% movement capability. Conforms to BS 6920 for the metallic water soluble impurities. Conforms to the requirements of VOC content specifications in LEED credit EQc4.1 "Low-emitting products" of SCAQMD rule 1168.

APPLICATION AREAS

Expansion joints between many different construction materials. Bonding of roof tiles. Installation of PVC window frames. Connection joints between wood window- and doorframes and walls. Joints between prefabricated construction materials. Sealing and bonding of ventilation ducts, gutters and spouts etc. For expansion joints between pre-cast concrete panels.



P635 POLYURETHANE SEALANT CONSTRUCTION

One-component, low-modulus polyurethane sealant that cures on exposure to atmospheric humidity. It possesses excellent adhesion to all typical construction materials such as cement based materials, brick, ceramic, glass, wood, galvanized and painted sheet iron and various plastics.

FEATURES

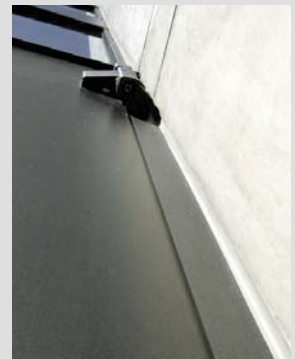
Possesses permanent elasticity. No sagging - Thixotropic. No surface tackiness after full cure. Do not pick up dirt. No shrinkage. Enhanced storage stability. Can be applied with hand gun and tooled easily. Paintable. Cures bubble-free. 25% movement capability. Conforms to BS 6920 for the metallic water soluble impurities. Conforms to the requirements of VOC content specifications in LEED credit EQc4.1 "Low-emitting products" of SCAQMD rule 1168.

APPLICATION AREAS

Expansion joints between many different construction materials. Movement and connection joints in floors. Indoor and outdoor applications for pedestrian and traffic areas. Joints between prefabricated construction materials. Sealing and bonding of ventilation ducts, gutters and spouts etc. For expansion joints between pre-cast concrete panels. Meets the requirements of ISO 11600 F 25 LM.

Conforms to BS 6920 for the metallic water soluble impurities and is suitable for use in drinking water systems.

SHORE A35



Scan QR code for product video.



Scan QR code for product video.



P645 PU METAL SEALANT (AUTOMOTIVE&CONSTRUCTION)

One-component, high-modulus polyurethane sealant that cures on exposure to atmospheric humidity. It possesses excellent adhesion to sheet iron, aluminum, stainless steel, lead, copper, ceramic, glass, wood and various plastic materials.

FEATURES

Permanently flexible. Non-sag consistency - Exceptional thixotropy. Non-sticky / does not pick up dirt. Improved storage stability. Easy to gun, can be easily smoothed. Over-paintable. Conforms to the requirements of VOC content specifications in LEED credit EQc4.1 "Low-emitting products" of SCAQMD rule 1168. Meets the French VOC requirements for class A+.

APPLICATION AREAS

Body construction of cars, containers, caravans etc. Sealing and bonding of ventilation ducts, gutters and spouts etc. Sealing of sheet metal seams. For vibration reduction in all type of sheet metal assembly works. Sealing against water, air, gas and dust.

SHORE A45





Scan QR code for product video.

SHORE A50



647FC

PU METAL SEALANT FAST CURING (AUTOMOTIVE & CONSTRUCTION)

One-component, high-modulus polyurethane sealant that cures on exposure to atmospheric humidity and must be used when fast curing is essential. It possesses excellent adhesion to sheet iron, aluminum, stainless steel, lead, copper, ceramic, glass, wood and various plastic materials.

FEATURES

Fast Curing. Permanently flexible. Non-sag consistency. Non-sticky / does not pick up dirt. Improved storage stability. Easy to gun, can be easily smoothed. Paintable.

APPLICATION AREAS

Body construction of cars, containers, caravans etc. Sealing and bonding of ventilation ducts, gutters and spouts etc. Sealing of sheet metal seams. For vibration reduction in all type of sheet metal assembly works. Sealing against water, air, gas and dust. Conforms to the requirements of VOC content specifications in LEED credit EQc4.1 "Low-emitting products" of SCAQMD rule 1168. Meets the French VOC requirements for class A+



640SL

SELF LEVELING PU SEALANT

One-component self-leveling polyurethane sealant ideal for horizontal applications. Its elasticity allows it to absorb continual movements of the structure caused by thermal changes without problems of cracking.

FEATURES

One component, no mixing required. Self-leveling consistency, easy to apply in horizontal joints. Possesses permanent elasticity. High adhesion strength. Capable of $\pm 25\%$ joint movement. Paintable.

APPLICATION AREAS

Used for sealing of horizontal joints. Interior and exterior areas. Expansion joints between many different construction materials. Control joints. Industrial floors. Driveways/Garages, sidewalks, decks.



905N

NEUTRAL SILICONE (BUILDING & CONSTRUCTION)

A neutral cure, high performance silicone sealant designed for gap filling and sealing in a wide range of use in building and construction. It combines the advantages of outstanding adhesion to building materials with its non-corrosive and odorless curing.

FEATURES

100% solventless silicone. Excellent weatherproof and UV resistant. No Cracking or Shrinking. Water resistant. Very low odor and noncorrosive. Excellent flexibility and adhesion to numerous porous and non-porous. Substrates for large scale construction and glazing applications. Resistant to temperature extremes (-60 °C to +180 °C). Fast curing, low modulus, high elasticity. High viscosity non slump formula.

APPLICATION AREAS

Non-corrosive joint sealing for walls, windows and doors. Glass to glass and glass to aluminium sealing. Sealing applications in kitchens and bathrooms. Sealing of connection joints in building industry (brick, wall, concrete, PVC, wood, glass etc.)





910N ROOF & PLUMBING NEUTRAL SILICONE

One-component, high quality Neutral curing 100% silicone sealant designed for applications where long term durable plumbing, spouting, roofing, flashing, cladding and guttering are required. It is suitable for sealing of connection

FEATURES

Outstanding adhesion without primer on joining elements made from brick, stone, concrete, wooden, plastic, steel, aluminum, zinc, porcelain, ceramic, PVC, metal, glass and porous surfaces. Highly elastic, +/-25% movement capability. UV, water and weather proof. Non-corrosive neutral cure. Fast curing. Low odor. Interior/exterior use. Easy to apply. Chemically resistant. Non-sag.

APPLICATION AREAS

Joints and cracks in gutters, flashing, downpipes, lap joints, skylights and cladding walls. Vent and HVAC ducts systems.



905E NEUSEAL NEUTRAL SILICONE

Neutral cure, silicone sealant, exclusively created for weather sealing and glazing application. It forms highly resistive weatherproof seal on windows and building facades. It is also suitable for sealing applications on the surfaces where acetoxy silicone is not desired.

FEATURES

Provides permanent elasticity. Outstanding adhesion to many porous and non-porous substrates. Exceptional resistance to temperature extremes. Very low odor and non-corrosive to metals. Excellent UV resistance. Not affected by exposure to sunlight, rain, snow and maintains it over many years. Excellent flexibility. Fast curing, low modulus, high elasticity. High viscosity non slump formula.

APPLICATION AREAS

Premium weather sealing and joint sealing for walls, windows and doors. Sealing and mounting window and door frames. Sealing applications of marble, stone and other porous substrates. Vent and HVAC ducts systems. Outstanding primerless adhesion on joining elements made from brick, stone, concrete, wooden, plastic, steel, aluminum, zinc, porcelain, ceramic, PVC, metal profiles, glass and porous surfaces. Preliminary test is recommended for some plastics if necessary.



915N WEATHERSEAL NEUTRAL SILICONE

A neutral cure, premium performance silicone sealant, exclusively produced for weather sealing and glazing application. It forms highly resistive weatherproof seal on windows and building facades.

FEATURES

Provides permanent elasticity thanks to its 100% silicone formula. Not affected by exposure to sunlight, rain, snow and maintains it over many years. Exceptional resistance to temperature extremes. Very low odor and noncorrosive. Excellent flexibility and adhesion to numerous porous and non-porous. Substrates for large scale construction and glazing applications. Fast curing, low modulus, high elasticity. High viscosity non slump formula.

APPLICATION AREAS

Premium weather sealing and joint sealing for walls, windows and doors. Sealing and mounting the window and door frames. Sealing applications of marble, stone and other porous substrates. Sealing of connection and expansion joints.



918N NEUTRAL SANITARY SILICONE



One component, high quality moisture curing Neutral silicone sealant designed for sanitary applications where non-corrosive, moldproof and chemically resistant properties are required. It is suitable for sealing of connection joints between a variety of substrates in wet areas.

FEATURES

Mold & mildew proof. Resistant to cleaning agents. Maintains its flexibility at temperature extremes. Highly elastic, +/-25% movement capability. UV, water and weather proof. Non-corrosive neutral cure. Fast curing. Low odor. Interior/exterior use. Non-sag.

APPLICATION AREAS

Sealing applications of joints around bathtubs, showers and sinks. Sealing of joints between tiles, ceramic, metal sheets and walls. Sealing expansion joints in tile walls. Sealing of connection joints between walls and floors. Sealing of joints between glazing and supporting substrates.



602 BITUM SEALANT

Solvent-based plasto-elastic bituminous sealant, reinforced by fibres, for gluing and reparations on bituminous surfaces. After curing a permanent flexible mass is formed.

FEATURES

Immediate and permanent adhesion on all common construction materials (such as brick, concrete, lead, zinc, tiles, isolation panels, certain plastics, etc...) Can be applied under humid conditions. It is thixotropic and therefore cannot drip, flow or spill and makes no threads. Free from asbestos. Remains flexible after processing and vulcanization. Resistant to moisture. Economic in use. Inflammable (when used properly). Highly insulating. Protects against rust and moisture.

APPLICATION AREAS

Waterproof sealing of joints, seams, chimneys, ventilation tubes, drainpipes, etc. Adhesive for synthetic materials, tiles, concrete, rubber, insulating panels etc. Sealing seams in wooden ships or boats.



907N EPDM SILICONE SEALANT

One component, neutral curing, high performance silicone sealant specially developed for bonding and sealing of EPDM sheets.

FEATURES

Moisture curing. Very good adhesion on porous and nonporous surfaces including EPDM. Resistance to weather conditions. Fast curing. High elasticity. %100 Silicone, solvents

APPLICATION AREAS

Bonding of EPDM sheets to each other. Sealing between EPDM sheets and many different building surfaces.



917N IG SEALANT NEUTRAL

One- part silicone sealant developed for use as a secondary sealant in a dual-sealed insulating glass unit. Insulating glass sealant can bond the individual components, forming a weather-resistant unit.

FEATURES

Excellent unprimed adhesion to glass and metal substrates, such as galvanized steel, stainless steel. One-component formulation minimizes waste and downtime by eliminating base purging and static mixer maintenance. Consistently non-slump, permitting automated glazing. Non-corrosive by products. Fast curing formula. Resistant to temperature extremes (-60 °C to +180 °C).

APPLICATION AREAS

Primarily used as a secondary sealant in production of dual-sealed insulating glass unit production. Insulating glass silicone sealant can be also recommended with insulating glass units incorporating specialty glass types.



100S SANITARY KITCHEN & BATHROOM SILICONE

Acetoxy cure, high performance, mold-proof silicone sealant designed for gap filling and sealing in a wide range of sanitary applications.

FEATURES

100% Silicone, solventless. One component, moisture-cured. Highly Resistant to mold formation. Excellent primer less adhesion to numerous porous and non-porous substrates. Excellent weather ability in direct sunlight, rain, snow and ozone. Resistant to temperature extremes (-60 °C to +180 °C). Fast curing. Low modulus, high elasticity. Outstanding resistance to mildew and fungus. Does not crack or discolor. Withstands detergents, cleaning agents and chemicals. Acetoxy curing system. Conforms to the requirements of VOC content specifications in LEED credit EQc4.1 "Low-emitting products" of SCAQMD rule 1168.

APPLICATION AREAS

Sealing of connection joints. Weather seal applications. Glazing works. Sanitary joints: Sealing applications in kitchens and bathrooms.



CE
EN 15651-1
EN 15651-2
EN 15651-3

100D SHOWER CABINE KITCHEN & BATHROOM SILICONE

Specially formulated for use in production and installation of shower cabins which has no solvent and shows excellent mold resistant properties. It's a superior sealant for sealing and glazing applications featuring excellent adhesion and durability.

FEATURES

Conforms to ISO EN 11600-F-20LM. 100% silicone, does not contain any solvent. Cures very fast. Mold-Proof. No shrinkage. Stays bright and clean. Outstanding resistance to mildew and fungus. Resistant to temperature extremes and aging. Does not crack or discolor. Withstands detergents, cleaning agents and chemicals. Acetoxy curing system. Conforms to the requirements of VOC content specifications in LEED credit EQc4.1 "Low-emitting products" of SCAQMD rule 1168.

APPLICATION AREAS

Glazing and fixing in shower cabins during production. Filling joints between tiles, tub and shower cabin during installation. Filling joints between bath tubs and tiles after production. Waterproofing sinks.



CE
EN 15651-1
EN 15651-2
EN 15651-3



Scan QR code for product video.



100AQ AQUARIUM NON-TOXIC SILICONE

Non-toxic, solvent-free silicone sealant for use in aquarium construction and glazing applications. It's a high-quality acetic curing system based silicone sealant featuring excellent adhesion to glass and many other non-porous surfaces.

FEATURES

100% silicone. Very good bonding strength. Rapid curing. Non-toxic to fish. One component, cures with atmospheric moisture. Keep its elasticity at low and high temperatures. Does not crack, discolour or shrink. Resistant to many chemicals. Resistant to UV radiation.

APPLICATION AREAS

Bonding, sealing and repairing of aquariums.



EN 15651-1
EN 15651-2
EN 15651-3

Scan QR code for product video.

100E UNIVERSAL SILICONE SEALANT

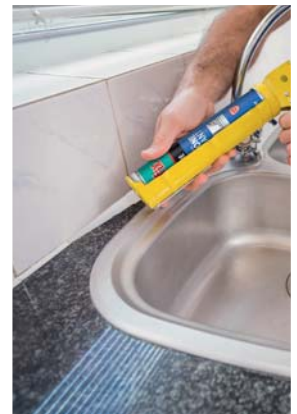
One-component silicone sealant for a range of general sealing and glazing applications. It provides a strong adhesion and suitable for use on common non-porous building materials.

FEATURES

Stays permanently elastic after curing. Remains flexible in low and high temperatures. Resistant to temperature extremes. Resistance to aging, cracking and discoloring.

APPLICATION AREAS

Sealing around windows and doors. Sealing in DIY applications. On bathroom, kitchen and plumbing applications. Connection and expansion joints on glass, porcelain, steel etc. Sealing electric, telephone etc. sockets and switches.



Scan QR code for product video.

AC578 SANITARY BATH & KITCHEN ACRYLIC SEALANT

High-quality, one-component acrylic based joint sealant that is suitable for general sealing in and around kitchen and bathroom. The product prevents mold growth to the sealant thanks to its powerful fungicide content.

FEATURES

Perfect adhesion without use of a primer on most, even slightly damp substrates. Can be painted over after curing. Colourfast and waterproof after curing. Non-stringing, non-sag formula.

APPLICATION AREAS

Sealing around kitchen worktops etc. Sealing around baths, sanitary ware, basins and ceramics. Internal sealing around uPVC, timber and metal window and door frames. Filing gaps, cracks and joints in facades, walls and ceilings before painting.





AC585 HIGH PERFORMANCE SEALANT

Akfix AC585 is a one-component, premium quality acrylic based sealer. It is suitable for sealing low movement joints between construction materials such as brick, concrete, wood, drywalls and plasterboards, etc.

FEATURES

Permanently flexible, crack proof. Easy tooling and water clean-up. Very low VOC content. Interior/ exterior use. Sandable. Non-sag. Paintable. Water-proof after curing.

APPLICATION AREAS

Filling low movement joints between various construction substrates such as brick, concrete, wood, drywalls and plaster etc. Filling cracks in walls, plasters and on ceilings. Sealing corner joints and cornices. Sealing window and door frames. Sealing gaps in skirting boards and staircases.



AC590 ACRYLIC DUCT SEAL

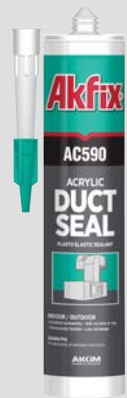
Fiber reinforced, water based duct sealant.

FEATURES

Excellent workability. Very low VOC content. Permanently flexible. No drip nor sag. Low shrinkage. Indoor and outdoor use.

APPLICATION AREAS

Suitable for sealing metal to metal joints to prevent air leaks in air-conditioning, refrigeration, ventilation and air distribution systems.



AC600 ACRYLIC PINK SEAL

Multipurpose acrylic sealant formulated to provide a dry time indicator.

FEATURES

Pink in color and becomes white after drying. Very low VOC content. Water-proof after curing. Very easy application. Over paintable. Can be used on all porous surfaces such as brick, concrete, wood etc.

APPLICATION AREAS

Sealing of low and medium movement joints between various construction materials (wood, concrete, brick etc.). Sealing joints between windows, walls, doors etc. Filling cracks in walls and on ceilings.



AC603 ACRYLIC CLEAR SEAL

Plasto-elastic acrylic adhesive and sealant that becomes crystal clear upon curing.



FEATURES

Becomes transparent when cured. Very low VOC content. Water-proof after curing. Can be used on all porous surfaces such as brick, concrete, wood etc. Easy to apply.

APPLICATION AREAS

Suitable for sealing applications in bathroom and kitchen. Can be used as an adhesive for wood, bricks, concrete etc.



AC604 ULTRALIGHT GAP FILLER

One-component, water based acrylic sealant designed for general purpose gap filling and repairing wall before painting. It provides permanently water repellent layer after curing. Especially suitable for filling low movement joints and cracks between construction materials such as brick, concrete, wood, drywalls and plasterboards, etc.

FEATURES

Flexible, crack proof. Outstanding adhesion to concrete, masonry and brick, etc. Very low VOC content. Interior/exterior use. Water clean-up. Paintable. UV, water and weather proof. Easy and smooth application.

APPLICATION AREAS

Use as wall repair compound on small holes and cracks in wallboard, wood & plaster. Filling low movement joints between various construction substrates such as brick, concrete, wood, drywalls and plaster etc.



AC605 ACRYLIC SEALANT

One-component universal acrylic sealant suitable for filling cracks and joints both indoors and outdoors. It's a cost-effective plastic-elastic sealant ideal for particularly static joints.



FEATURES

Over paintable. Very low VOC content. Very easy to apply and clean. Water-proof after curing. Can be used on all porous surfaces such as brick, concrete, wood etc. No odour.

APPLICATION AREAS

Sealing of low movement joints between various construction materials (wood, concrete, brick etc.). Filling cracks in walls and on ceilings. Sea-lining joints between windows, walls, doors etc.





AS606 SILICONIZED SEALANT

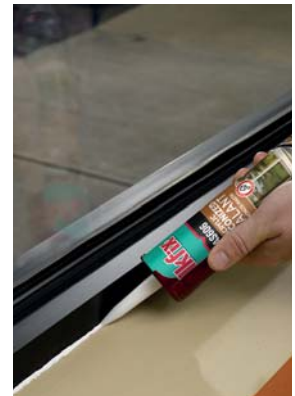
One-component acrylic emulsion based sealant reinforced with silicone emulsion. It has superior adhesion and good elasticity.

FEATURES

Water based & Non-toxic. Very low VOC content. Water-proof after curing. Over paintable. Very easy to apply and clean. Can be used on all porous surfaces such as brick, concrete, wood etc. No odour.

APPLICATION AREAS

Sealing of low movement joints between various construction materials (wood, concrete, brick etc.). Sealing joints between windows, walls, doors etc. Filling cracks in walls and on ceilings.



AC580 RAPID SEAL

Akfix AC 580 is one component high quality acrylic emulsion based sealant. Overpaintable crack-free after just 10 minutes.

FEATURES

Crak-free painting in 10 minutes. 15% movement capability. Water based, non toxic. Very low VOC content. Water-proof after curing. Very easy to apply and clean. Can be used on all porous surfaces such as brick, concrete, wood etc. No odour.

APPLICATION AREAS

Sealing of low movement joints between various construction materials. (wood, concrete, brick etc.). Sealing joints between windows, walls, doors etc. Filling cracks in walls and on ceilings.



AS609 ALL SEASONS CAULK SEALANT

One-component general purpose acrylic sealant reinforced with silicone dispersion. AS609 provides superior crack-proof durability and adhesion that prevents air,moisture,insect,dust and dirt from passing through expansion joints and cracks. It is developed for use in all seasons when freeze thaw stability properties and durable flexibility are necessary.

FEATURES

Freeze thaw stable. Paintable. Interior/exterior use. Permanently flexible, crack proof. Easy water clean-up. Water-proof after curing. Low VOC content. Smooth and easy tooling. Low odor. Excellent adhesion to most porous surfaces such as brick, concrete, wood, drywalls and plaster etc.

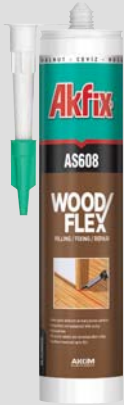
APPLICATION AREAS

Sealing of low and medium movement joints between various construction materials. Sealing window and door frames. Sealing siding and trim. Sealing anywhere a wetjer-proof seal is required. Sealing corner joints. Filling cracks in walls and on ceilings.



AS608

WOODFLEX FILLING / FIXING / REPAIR



AS608, is a one component, high-quality flexible wood sealant based on acrylic dispersion. Can be used for filling, fixing and repair. In addition to wood, adheres well to concrete, plaster, cement, plaster boards, bricks and metals.

FEATURES

Solvent free. Very low VOC content. Colourfast and waterproof after curing. Can be varnished and sandable after curing. Withstands surface movement up to 15%. Very good adhesion on many porous surfaces. Very easy to apply.

APPLICATION AREAS

Sealing of joints between wooden floors and walls. Sealing of laminate flooring. Sealing of joints between floors and skirting boards. Suitable for cracks in wooden floors.



AC575

WOOD FILLER

Water-based, ready to use, premium-grade multi-purpose filler especially formulated for filling and repairing holes and imperfections on wood materials. Once dry, the filler leaves a sandable surface, which can be stained or painted.

FEATURES

No mixing required, easy to use. Dries quickly to a hard finish. Easy to sand, can be drilled. Can be varnished or painted. Non flammable. Water based non-toxic. Fresh filler can easily be cleaned with water.

APPLICATION AREAS

Akfix AC575 wood filler is used to fill cracks, splits, holes and surface defects and imperfections in all kinds of wood. Suitable as a grain filler, including end grain. Also can be used for repairs of concrete and plaster surfaces of walls and ceilings.



TILE GROUT

Tile Grout is a water based repair product suitable for indoor and outdoor tiling projects

FEATURES

Ready to use, no mixing is required. Form permanently water repellent layer after curing. Solvent free. Adheres to all common building surfaces. Flexibility – Resist cracking. Cleans up easily with water.

APPLICATION AREAS

Suitable for grouting ceramics, mosaic walls and floor tiles. Ideal for tiling repairs, grouting small areas.



WALL REPAIR PATCH KIT



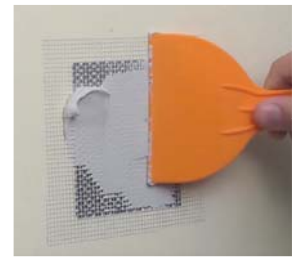
Consists of ready mixed drywall repair compound with high crack filling capacity in concrete, flexible self-adhesive perforated aluminum patch, grit sandpaper and ergonomic plastic putty knife.

FEATURES

No mixing required, easy to use. High crack filling capacity. All required equipment is in one package. Dries quickly to a hard finish. Can be varnished or painted. Easy to sand, can be drilled. Water based non-toxic.

APPLICATION AREAS

Drywall Repair Kit is used to fill cracks, splits, holes and surface defects and imperfections in construction materials like wood, concrete, brick etc. Effectively repairs the concrete and plaster surfaces of walls and ceilings.



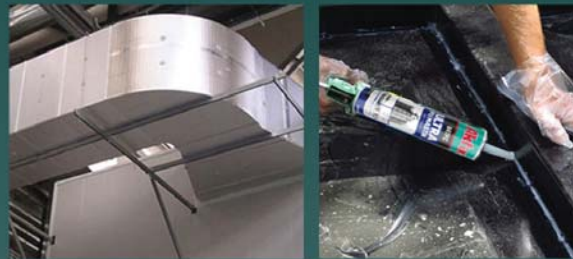
Scan QR code for product video.



647FC

METAL

AUTOMOTIVE & CONSTRUCTION PU SEALANT



**Fast
Curing**



**High
Modulus**

FAST CURING

HIGH MODULUS

Excellent adhesion to sheet iron, aluminum, stainless steel, lead, copper, ceramic, glass, wood and various plastic materials.

AKKIM
SEALANTS & ADHESIVES

PU Foam

Products

www.Akfix.com



Creates Permanent Solutions

THERMCOAT THERMAL & ACOUSTIC INSULATION PU SPRAY FOAM

ThermCoat is a high quality heat and sound insulation product for buildings and houses. Provides a unique, monolithic thermal insulation application without junctures, seams and gaps. An innovative alternative to traditional building insulation methods such as polystyrene heat insulation boards, glass wool and rock wool. Single-component product used with an applicator gun. It does not contain any propellant gases which are harmful to the ozone layer.

FEATURES

Excellent adhesion to all kind of building materials, Can be applied easily to uneven, hard to reach surfaces where it is not possible to use traditional insulation materials, Excellent thermal insulation value (0.025 W/(m.K), Elimination of thermal bridges, Elimination of the dew point, (*)Yield up to 3m² with 1.5cm thickness for one layer if applied from a distance of ~40cm with normal application speed, No need to use mechanical fastening elements after use, Over paintable,

APPLICATION AREAS

Roofs, attics, facades, foundations, basements, floors, interior walls, inter-floor overlappings, interior partitions, ceilings and cellars, Structural elements of buildings, balcony, loggia, doors, window slopes, pipes, canals and tank kind round surfaces, uneven and rough all surfaces, Car body and car trailers, boats, yachts, vessels and all kind of sea vehicles.



Scan QR code for product video.



890 MULTI-POSITION, MULTI PURPOSE PU FOAM

Multi-Position PU Foam is a single-component, moisture-curing and self-expanding aerosol polyurethane foam. It is designed for easy dispensing through the straw adapter included with each can. It is suitable for multi-position applications. It does not contain any propellant gases that are harmful to the ozone layer.

FEATURES

Multi-positioning foam; application in all positions (360°). Excellent adhesion & filling capacity and high thermal & acoustical insulation value. Excellent mounting capacity and stability. Adheres to almost all building materials with the exception of surfaces such as polyethylene, teflon, silicone and surfaces contaminated with oils and greases, mold release agents and similar materials. Mould-proof, water-proof, over paintable. Cured foam dries rigid and can be trimmed, shaped and sanded.

APPLICATION AREAS

Fixing and insulating of door and window frames. Filling and sealing gaps, joints and cavities. Filling of penetrations in walls. Insulating electrical outlets and water pipes.



FAST 55 COMBO PU FOAM

Single-component PU foam can be used both with an applicator gun and straw at the same time. Cures swiftly with moisture. Features high volumetric yield, reusability, fast curing and easy application. It does not contain any propellant gases which are harmful to the ozone layer.

FEATURES

Cures faster according to standard foams. A combination of straw and gun foam. Can be used with both straw and gun adapter. High yield up to 55 liters if gun applied and 45 liters if straw applied depending on temperature and humidity. Excellent adhesion & filling capacity and high thermal & acoustical insulation value. Economical consumption thanks to precise application. Conforms to fire class B3 according to DIN 4102-1. Mold-proof, water-proof and over paintable.

APPLICATION AREAS

Fixing and insulating of door and window frames. Filling and sealing of gaps, joints and cavities. Filling of penetrations in walls. Insulating electrical outlets and water pipes.





Straw use

Gun use



Fire Class

ALL IN ONE PU FOAM

Polyurethane foam, which can be used with the gun as well as its use with both large and narrow diameter pipettes thanks to its special formulation. Besides its fire retardant feature, the adjustment of the expansion ratio (less expansion [gun], medium level expansion [narrow diameter pipette]) and high expansion [large diameter pipette] make it an ideal solution for all applications.

FEATURES

Application with gun: High metric efficiency, economical. Easy to control, comfortable application. Up to 45 liters of efficiency and 40% expansion depending on humidity and temperature. Application with narrow diameter pipette; High filling capacity with %180-240 expansion. Easy to use for DIY users. Application with large diameter pipette; Easy to fill big caps with %300-380 expansion rate. Very high efficiency for filling big caps. Excellent adhesion on most building materials (except Teflon, PE, PP). High thermal and acoustic isolation. Cured foam can be cut, sanded, painted and plastered. Mildew & water resistant. Does not contain propellants harmful to ozone layer. Classified as B2 according to DIN 4102 and E to EN 13501-1 standards.

APPLICATION AREAS

Installation and isolation of door and window frames, In filling and sealing gaps, large cracks and holes, For thermal and acoustic isolation, In the isolation of electrical installations, hot and cold water pipes. As a multi-purpose filler, bonder and isolator.



892P RV BLACK PU GUN FOAM

Top quality filling and assembly foam with a special formulation that can be applied at low temperatures. The foam provides an airtight seal by filling even hard-to-reach gaps. When insulation is completed, heating and air conditioning costs are reduced.

FEATURES

Developed for caravan applications. The Black Colour provides excellent protection against UV light. Excellent bonding and filling properties. High thermal and acoustic insulation value. Efficiency up to 45 liters depending on humidity and temperature. Mildew & water resistant. Contains fire retardant.

APPLICATION AREAS

Filling and sealing gaps, large cracks and holes, Thermal and acoustic insulation, In the isolation of electrical installations, hot and cold water pipes, As a general purpose filling, bonding and insulating material.



MAXIMUM STRAW PU FOAM 65L

Low expansion and maximum yield formulation aerosol polyurethane foam especially developed for fixing door&window frames. It yields minimum 100% more foam than straw foams, cures faster and forms easy to cut flexible foam.

FEATURES

Maximum Yield: Provides 100% more yield than that of standard straw foams. Low-Expansion: Ensures not to bend or bow door and window frames. Decreases foam waste. Fast Cure. Improved Adhesion&Stability: Better non-sagging performance on vertical surfaces. Usable in 4 Seasons: Special formulation allows application at low temperatures (-2 °C). Closed-Cell Structure: Provides effective heat&sound insulation. It does not contain any propellant gases which are harmful to the ozone layer.

APPLICATION AREAS

Fixing&sealing of door and window frames. Sealing applications where low-expansion is needed. Filling small cavities.





806 DOOR & WINDOW PU FOAM

One-component, moisture-curing and self-expanding aerosol polyurethane foam. It is designed for easy dispensing through the straw adapter included with each can. As a straw foam, behaves like a gun foam. Straw use but has low expansion like gun use foams. It does not contain any propellant gases that are harmful to the ozone layer.

FEATURES

Excellent adhesion & filling capacity and high thermal & acoustical insulation value. Excellent mounting capacity and stability. Adheres to almost all building materials with the exception of surfaces such as polyethylene, Teflon, silicone and surfaces contaminated with oils and greases, mold release agents and similar materials. Mould-proof, water-proof, over paintable. Cured foam dries rigid and can be trimmed, shaped and sanded.

APPLICATION AREAS

Fixing and insulating of door and window frames. Filling and sealing gaps, joints and cavities. Filling of penetrations in walls. Insulating electrical outlets and water pipes.



888P FLEXIBLE PU GUN FOAM

Single-component PU flexible foam used with an applicator gun and features flexibility, high performance, easier application and reusability. It does not contain any propellant gases which are harmful to the ozone layer. The foam has a minimum expansion after application (less than 50%) and is therefore very economical to use. The foam is very elastic and has a very high Acoustic Rating and Thermal Insulation value.

FEATURES

High elastic recovery ratio. Overcomes extreme physical movements without structural deformation. Shock and impact absorption. Excellent adhesion & filling capacity and high thermal & acoustical insulation value. Economical consumption thanks to precise application. High yield up to 45 liters depending on temperature and humidity. Mould-proof, water-proof and paintable.

APPLICATION AREAS

Vibrating constructions. Soundproof screen production. Application of soundproofing layer on industrial equipments. Reduction of noise transmission during use as fixing foam. Fixing and insulating of door and window frames. Filling and sealing gaps, joints and cavities. Filling penetrations in walls. Filling all joints in roof constructions. Enhancing thermal insulation in heating/cooling systems. Insulating electrical outlets and water pipes.



3XL HIGH EXPANDING PU GUN FOAM 65L

One-component professional pu foam which yields significantly higher volumes. It is used with a special applicator gun.

FEATURES

High yield up to 65 liters, depending on the humidity and temperature. Excellent adhesion on common construction materials. Economical consumption thanks to precise application.

APPLICATION AREAS

Fixing and insulating of door and window frames. Filling and sealing of gaps, joints and cavities. Filling of penetrations in walls. Insulating electrical outlets and water pipes. Instructions: Optimal can temperature +20°C.





805P PU GUN FOAM MULTI PURPOSE

One-component PU foam used with an applicator gun and features higher yield, easier application and reusability. It does not contain any propellant gases which are harmful to the ozone layer.

FEATURES

Excellent adhesion & filling capacity and high thermal & acoustical insulation value. Economical consumption thanks to precise application. High yield up to 45 liters depending on temperature and humidity. Conforms to fire class B3 according to DIN 4102-1. Mould-proof, water-proof and over paintable.

APPLICATION AREAS

Fixing and insulating of door and window frames. Filling and sealing of gaps, joints and cavities. Filling of penetrations in walls. Insulating electrical outlets and water pipes.



805 PU FOAM MULTI PURPOSE

One-component, moisture-curing and self-expanding aerosol polyurethane foam. It is designed for easy dispensing through the straw adapter included with each can. It does not contain any propellant gases that are harmful to the ozone layer.

FEATURES

Excellent adhesion & filling capacity and high thermal & acoustical insulation value. Excellent mounting capacity and stability. Adheres to almost all building materials with the exception of surfaces such as polyethylene, Teflon, silicone and surfaces contaminated with oils and greases, mold release agents and similar materials. Mould-proof, water-proof, over paintable. Cured foam dries rigid and can be trimmed, shaped and sanded.

APPLICATION AREAS

Fixing and insulating of door and window frames. Filling and sealing gaps, joints and cavities. Filling of penetrations in walls. Insulating electrical outlets and water pipes.



812P PU GUN FOAM MULTI PURPOSE WINTER -12°C

One-component PU foam used with an applicator gun and developed for applications in temperatures below to -12 °C.

FEATURES

Can be applied at frost temperatures. Excellent adhesion & filling capacity and high thermal & acoustical insulation value. Economical consumption thanks to precise application. High yield up to 45 liters. Mould-proof, water-proof and over paintable.

APPLICATION AREAS

Fixing and insulating of door and window frames. Filling and sealing of gaps, joints and cavities. Filling of penetrations in walls. Insulating electrical outlets and water pipes.



812

PU FOAM MULTI PURPOSE WINTER -12°C

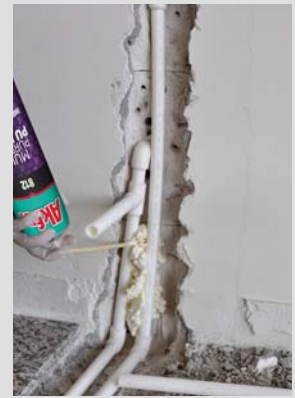
One-component, moisture-curing and self-expanding PU foam especially developed for applications at temperatures of as low as -12 °C.

FEATURES

High yield & stability and adequate pressure at frost temperatures. Excellent adhesion on most materials. Very good filling capacity. High thermal & acoustical insulation value. Resistant to moisture, heat, water and many chemicals.

APPLICATION AREAS

Mounting and insulating of door and window frames. Filling and sealing of gaps, joints and cavities. Filling of penetrations in walls. Improving thermal isolation in cooling systems.



FAST 70 MEGA PU GUN FOAM

Single-component, professional type, gun applicable PU foam. Cures swiftly with air humidity. Features higher volumetric yield, fast curing, reusability and easy application. It does not contain any propellant gases which are harmful to the ozone layer.

FEATURES

Cures faster (in 1.5 hours) according to standard PU Foams. Economical consumption thanks to precise application. High yield up to 70 liters depending on temperature and humidity. Excellent adhesion & filling capacity and high thermal & acoustical insulation value. Conforms to fire class B3 according to DIN 4102-1. Mold-proof, water-proof and over paintable.

APPLICATION AREAS

Fixing and insulating of door and window frames. Filling and sealing of gaps, joints and cavities. Filling of penetrations in walls. Insulating electrical outlets and water pipes.



850

MEGA PU GUN FOAM 65L

One-component professional PU foam which yields significantly higher volumes. It is used with a special applicator gun.

FEATURES

High yield up to 65 liters, depending on the humidity and temperature. Excellent adhesion on common construction materials. Economical consumption thanks to precise application. Conforms to fire class B3 according to DIN 4102-1. Mold-proof, water-proof and over paintable. It does not contain any propellant gases which are harmful to the ozone layer.

APPLICATION AREAS

Fixing and insulating of door and window frames. Filling and sealing of gaps, joints and cavities. Filling of penetrations in walls. Insulating electrical outlets and water pipes.





872 MEGA PU GUN FOAM 70L

One-component professional PU foam which yields significantly higher volumes. It is used with a special applicator gun.

FEATURES

High yield up to 70 liters, depending on the humidity and temperature. Excellent adhesion on common construction materials. Economical consumption thanks to precise application. Mould-proof, water-proof and over paintable. It does not contain any propellant gases which are harmful to the ozone layer.

APPLICATION AREAS

Fixing and insulating of door and window frames. Filling and sealing of gaps, joints and cavities. Filling of penetrations in walls. Insulating electrical outlets and water pipes.



940 SAFETY VALVE REUSABLE PU FOAM

PU foam which is never blocked thanks to its mechanical valve.

FEATURES

Can be re-used repeatedly even if partially used before. Even stored in horizontal or upside-down position the valve is never blocked. Better control of the outflow thanks to special adaptor. High horizontal yield thanks to special design tube. Mould-proof, water-proof and over paintable. It does not contain any propellant gases which are harmful to the ozone layer.

APPLICATION AREAS

Fixing and insulating of door and window frames. Filling and sealing of gaps, joints and cavities. Filling of penetrations in walls. Insulating electrical outlets and water pipes.



882 MEGA PU GUN FOAM WINTER -12°C 70 L

Single-component professional PU foam which yields significantly higher volumes. It is used with a special applicator gun.

FEATURES

High yield up to 70 liters, depending on the humidity and temperature. Excellent adhesion on common construction materials. Economical consumption thanks to precise application. Conforms to fire class B3 according to DIN 4102-1. Mould-proof, water-proof and over paintable. It does not contain any propellant gases which are harmful to the ozone layer.

APPLICATION AREAS

Fixing and insulating of door and window frames. Filling and sealing of gaps, joints and cavities. Filling of penetrations in walls. Insulating electrical outlets and water pipes.





885 MEGA PU GUN FOAM WINTER -25°C 60 L

One-component professional PU foam which yields significantly higher volumes. It is used with a special applicator gun.

FEATURES

High yield up to 60 liters, depending on the humidity and temperature. Excellent adhesion on common construction materials. Economical consumption thanks to precise application. Conforms to fire class B3 according to DIN 4102-1. Mould-proof, water-proof and over paintable. It does not contain any propellant gases which are harmful to the ozone layer.

APPLICATION AREAS

Fixing and insulating of door and window frames. Filling and sealing of gaps, joints and cavities. Filling of penetrations in walls. Insulating electrical outlets and water pipes.



895 MOUSE & PEST BARRIER PU FOAM

Mouse & Pest Barrier PU Foam contains an EPA-registered pesticide that protects the foam from attack by mice, birds, bats and tree squirrels. It also blocks ants, roaches, spiders and bees. Can be used to fill gaps and cracks inside garages, attics, crawl spaces, basements, under sinks, around pipes/electrical penetrations or any areas where pests, insects or drafts can enter.

FEATURES

Contains EPA-registered pesticide that protects foam from attack by mice and other pests. Excellent adhesion & filling capacity and high thermal value. Good for filling wide gaps with its high expansion rate. Cured foam dries rigid and can be trimmed, shaped and sanded. Conforms to fire class B3 according to DIN 4102-1. Mold-proof, water-proof and over paintable.

APPLICATION AREAS

To keep all kinds of insects, pests and rodents away from our habitats. Filling and sealing of especially wider gaps, joints and cavities. Fixing and insulating of door and window frames. Filling of penetrations in walls. Insulating electrical outlets and water pipes.



FENCE POST FIX

Fast setting, two component easy to use PU Montage Foam. Specifically designed for supporting and backfilling of wooden, PVC, steel, concrete and many types of in-ground posts. Pre-proportioned system that expands to fill the peripheral void between a post and the hole.

FEATURES

Easy to use; Quickly sets and fast to apply; High strength against impacts and shocks. Adheres to wood, vinyl and metals posts, as well as to the ground better than concrete. Waterproof; helps protecting the post against rotting, Can be used outside both in summer and winter time.

APPLICATION AREAS

Fence posts, garden light posts, mailboxes, signs, sport posts and poles such as basketball, football, volleyball and tennis.





800C FOAM CLEANER

Removes fresh PU foam and cleans the PU foam gun adapter after the application. Cleans surfaces, clothes, window&door frames and prevents the foam cure in the gun adapter.

FEATURES

Powerful solvent based aerosol cleaner for removing uncured PU foam (straw and gun adapter foam). Designed especially for cleaning the gun adapter of foam. Cleaner has a spray activator for removing the foam from the gun adapter. It can be used in all positions. Propellant gas is not harmful to the ozone layer.

APPLICATION AREAS

Cleaning of the gun adapter. Cleaning of the valves of the PU Foam Aerosol. Removal of uncured foam.



Therm Coat

THERMAL & ACOUSTIC INSULATION PU SPRAY FOAM



Perfect Choice For High Quality
Thermal and acoustic insulation!
Fast - Easy - Practical

Coatings

*Waterproofing
and Heat Insulation
Systems*

www.Akfix.com



Creates Permanent Solutions

AQUA ZERO HYBRID WATERPROOFING MEMBRANE

Aquazero; is a premium, liquid and cold applied, one-component silane modified polymer (SMP) based polymer, elastic, waterproofing membrane, free of bitumen, solvent and isocyanates. After fully cured, it forms waterproof, UV resistant surface which also repairs the cracks up to 5mm.



FEATURES

Applicable also on damp surfaces. Good resistance to UV, water and moisture. Self-leveling. Paintable. Applicable by brush, roller or a spatula. Provides water vapor permeability, allowing the surface to breathe. Environmental friendly - Free of bitumen, isocyanates and solvents.

APPLICATION AREAS

Protection, repair, restoration and waterproofing of the following surface and areas: Concrete floor slabs and roofs. Balconies and terraces. Small horizontal movement joints. As a flexible coating of roofs. Protection of Polyurethane Foam Insulation. Waterproofing of Wet Areas (under-tile) in bathrooms, kitchens, balconies, auxiliary rooms, etc.



Scan QR code for product video.



EM350 WATERGUARD ACRYLIC WATERPROOFING MEMBRANE

Acrylic Waterproofing Membrane is a one component, water based, acrylic copolymer based elastic waterproofing membrane.

FEATURES

Ready to use. Can be easily applied with airless spray gun, roller or brush. Low labor cost. Does not contain solvent, can be diluted with water. Water vapor permeable. Resistant to UV. Maintains elasticity even at low temperatures. Over paintable. High opacity. Can be colored with water based color pastes. Seamless application.

APPLICATION AREAS

Waterproofing of; Balconies, terraces and roofs. Facades. Wooden surfaces. Asphalt and bitumen floorings. Roofing details such as gutters, chimney edges etc.



EM600 WATERGUARD ACRYLIC WATERPROOFING MEMBRANE

Acrylic Waterproofing Membrane is a one component, water based, acrylic copolymer based elastic waterproofing membrane.

FEATURES

Ready to use. Can be easily applied with airless spray gun, roller or brush. Low labor cost. Does not contain solvent, can be diluted with water. Water vapor permeable. Resistant to UV. Maintains elasticity even at low temperatures. Over paintable. High opacity. Can be colored with water based color pastes. Seamless application.

APPLICATION AREAS

Waterproofing of; Balconies, terraces and roofs. Facades. Wooden surfaces. Asphalt and bitumen floorings. Roofing details such as gutters, chimney edges etc.



Scan QR code for product video.



EM800 WATERGUARD COOL ROOF WATERPROOFING MEMBRANE

Waterguard is a one component, cold applied, water based, modified polyurethane dispersion based elastic waterproofing membrane.

FEATURES

Ready to use. High elasticity. High UV stability. Can be easily applied with airless spray gun, roller or brush. Low labor cost. Does not contain solvent, can be diluted with water. Water vapor permeable. Maintains elasticity even at low temperatures. Over paintable. High opacity. Seamless application. High solar reflectance. High resistance to dirt pick-up for long term solar reflectivity.

APPLICATION AREAS

Waterproofing of exposed roofs in both new construction and refurbishment. For reflective coating to enhance energy efficiency. Suitable for metal, concrete, brick, stone, wood, asphalt and bitumen surfaces



PUR 450 PU WATERPROOFING MEMBRANE

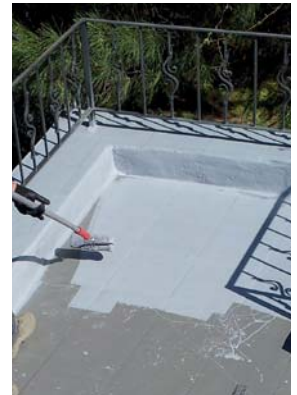
One part, easy to apply, specially formulated polyurethane based, elastic, crack bridging membrane. It cures to form a highly elastic, seamless, waterproof coating with excellent crack bridging properties. Its performance is maintained even at low temperatures.

FEATURES

Excellent Adhesion. Easy application. May be applied interior and exterior areas. Crack Bridging. Highly elastic. Economical in use. Silk/matt appearance. Root penetration resistant

APPLICATION AREAS

Seamless coating on roofs and concrete structures, which can also be used as a waterproofing membrane on non-trafficked areas. Not suitable for permanent water immersion. Can be applied on concrete, brickwork, asbestos cement, roof tiles, roofing felt etc. For areas with specific official performance requirements, please contact us for product selection.



EN 1504-2
Scan QR code for product video.

T525 PU TOPCOAT WATERPROOFING MEMBRANE

One component, aliphatic polyurethane based coating material with high permanent elasticity, superior UV resistance, color stability and easy-to-clean surface. It has a special curing system (triggered by the moisture) and does not create bubbles during curing.

FEATURES

Excellent adhesion properties. Excellent resistance to abrasion and wear. Prevents color fading and dust formation likely to occur on polyurethane waterproofing materials. Easy application (by roller and airless gun). Forms bright and easy-to-clean surface. UV resistant. Over-walk able after application (light pedestrian traffic). Impervious to water and deicing salts. Uniform structure without any connection edges.

APPLICATION AREAS

It is used as a topcoat on polyurethane-based waterproofing materials for protecting waterproofing, giving a decorative appearance to the surface, maintaining brightness of the surface and preventing dust formation.



HB400

WATERGUARD LIQUID FLASHING HYBRID

Liquid Flashing Hybrid is a hybrid polymer based, an all-purpose, fluid applied flashing used to create a weather resistant, fully adhered waterproof barrier system around window and door installations.

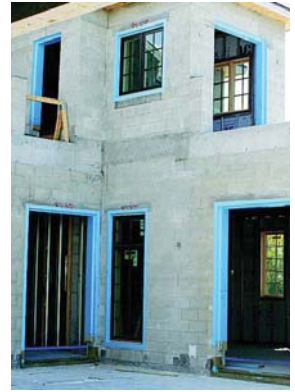


FEATURES

Does not contain solvent, silicone, bitumen or isocyanate. Easy to use trowel application. No mixing needed and primer required. Water and frost resistant. Allows substrates to breathe. Bonds to multiple materials. Can be applied damp surface. Prevents membrane wear and tear. Low labor cost.

APPLICATION AREAS

Indoor and outdoor. Vertical and horizontal surfaces. Surface restoration of old substrates. Foundations, basements and garages. Bathroom and wet floors.



HB420

WATERGUARD HYBRID ROOF DETAIL

Hybrid Roof Detail is a hybrid polymer based liquid flashing compounds for waterproofing of complex roofing details and connections such as pipes, chimneys, lightdomes, gutters etc.

FEATURES

Does not contain solvent, silicone, bitumen or isocyanate. Simple application. Forms seamless membrane without joints or leak possibilities. Water and frost resistant. Provides water vapor permeability. Full surface adherence without any additional anchoring. Can be applied damp surface. In case of damage, membrane can be easily repaired locally within minutes. Low labor cost.

APPLICATION AREAS

The Roof Detail Hybrid is mainly used to waterproof details like; Pipes, Flashings and 90° angles, Lightdomes, Chimneys, Wall-floor connections, Roofing and gutters, Photovoltaic systems, Concrete, mortar, cement screed, wood etc.



Scan QR code for product video.

SLB 51

EPOXY COATING SELF LEVELING (BASE COAT)

Two component, solvent free, self-leveling, epoxy coating with high impact and abrasion strength with also a very good resistance against acidic and basic solutions.

FEATURES

Solvent free. High impact resistance. Designed for application by brush and roller. Excellent chemical resistance. Excellent mechanical properties; high tensile and tear strength, abrasion resistance. Resistant to bacterial and fungus growth. Creates a glossy, easy to clean anti-dust surface.

APPLICATION AREAS

High traffic car parking areas. Warehouses. Industrial floors. Hotels. Retail shopping areas. Hospitals.





SLT 41 EPOXY COATING SELF LEVELING (TOP COAT)

Two component, solvent free, self-leveling, high build epoxy top coat. Because of UV resistance and high gloss retention properties it is ideal for outdoor applications.

FEATURES

Solvent free, 100% solid. Attractive, high gloss, reflective coating. High impact resistance. Durable, impermeable and seamless. Excellent chemical resistance. Excellent mechanical properties; high tensile and tear strength, abrasion resistance.

APPLICATION AREAS

Typical applications may include:
Production rooms, offices and even pharmaceutical laboratories. Laboratories. Museums and galleries. Animal shelters and veterinary clinics.



TEX 71 EPOXY COATING TEXTURIZED (BASE COAT)

Two part, solvent free, epoxy resin based thixotropic coating. Its special formulation provides easy to clean, anti-slip unique texturized finish.

FEATURES

Slip Resistant. Good abrasion resistance. Chemically resistant. Can be subjected to normal up to medium heavy mechanical and chemical loading. Easy and fast application. Easy to clean.

APPLICATION AREAS

Slip resistant coating for concrete and cement screeds. Seal coat for broadcast coatings. Industrial floors, storage areas and loading stations. For production areas, storage and assembly areas or exhibition areas etc.. Parking lots and service areas.



SLT 21 EPOXY COATING SELF LEVELING (TOP COAT)

Two component, solvent free, self leveling, epoxy coating designed for high build decorative coatings and decorative quartz/flake applications. Akfix SLT21 is ideal as a clear top coat over decorative quartz or vinyl flake floor broad cast systems.

FEATURES

Solvent free, 100% solid. Attractive, high gloss, reflective coating. High impact resistance. Durable, impermeable and seamless. Excellent mechanical properties.

APPLICATION AREAS

Typical applications may include:
Offices and laboratories. Museums and galleries. Auto dealerships. 3D decorative applications.





POLYUREA CR 300

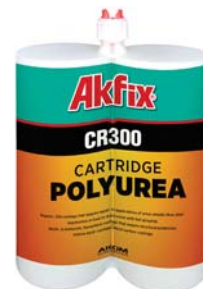
Fast curing, two-component, 100% solid, flexible, hybrid polyurea waterproofing system. It can be applied for protecting and coating of various surfaces. The product has been specially developed for use in repairs and small applications. It can be applied to the surfaces with standard pneumatic cartridge gun with a pressure of 6-8 bars. It can be easily applied in complex and complex details geometrically.

FEATURES

Economical Polyurea system. Easy and mobil application. Aromatic. %100 solid content. VOC free, odourless. Fast cure and fast service. Seamless application. Can be applied desired thickness. Excellent adhesion on concrete, metal, wood etc. Can be applied on horizontal and vertical application. Excellent resistant to weather conditions.

APPLICATION AREAS

Repairs. Old coatings that require repair. In applications of areas smaller than 20m². Application in hard to reach areas with hot spraying. Roofs. In balconies. Equipment coatings that require structural protection. Vehicle body coatings. Metal surface coatings.



POLYUREA 1044 STANDARD PURE

Very fast set, 2-component, 100% pure flexible coating derived from a reaction of an isocyanate prepolymer and an amine terminated resin blend. This aromatic pure polyurea has been designed to protect and coat concrete, metal, wood, ceramic, geotextile surfaces. It is moisture and temperature insensitivity, allowing application in problematic ambient conditions. The material must be applied utilizing high pressure, heated plural component spray proportioning equipment.

FEATURES

100% solid, VOC free, no solvents. No catalyst. Fast reactivity and fast return to service time. Seamless and jointless coating. Little or no odor. Excellent thermal stability. Water resistant. Excellent adhesion on concrete, steel, aluminum, plastics, fibers, wood, foam etc. Excellent flexibility. Non sensitivity to temperature and humidity. Excellent chemical resistance. Excellent impact and abrasion resistance. Anticorrosive. Very good tensile and structural strength. UV, chlorine and saltwater resistant. Variable application thickness possible. Broad color spectrum.

APPLICATION AREAS

General water isolation – pools, swimming pools, ponds, membranes, waste water treatments, manholes, sewer -lining , roofs. Floors – industrial floors, hospitals, factory, auto parks, garage. Truck bed liners. Construction – roads, bridges, railways, high speed railways, tunnels, airports. Marine industry.



Tested according to EN 1186 Migration testing on Food Contact Materials and found in compliance with regulation EU No 10/2011 with amendments

CE
EN 1504 - 2

POLYUREA HB 1010 HYBRID SYSTEMS

Very fast set, 2-component , 100% solid, flexible hybrid polyurea system. It is derived from a reaction of an isocyanate prepolymer and an amine terminated resin blend. It can be applied as an economic coating alternative to pure polyurea products. This product is VOC free and environmentally friendly. The material must be applied utilizing high pressure, heated plural component spray proportioning equipment.

FEATURES

Economic alternative to pure polyurea products. Fast reactivity and fast return to service time. Seamless and jointless coating. 100% solid, VOC free, no solvents. No catalyst. Little or no odor. Excellent thermal stability. Water resistant. Excellent adhesion on concrete, steel, aluminum, plastics, fibers, wood, foam etc. Excellent flexibility. Temperature and moisture insensitivity. Excellent chemical resistance. Excellent impact and abrasion resistance. Anticorrosive. Very good tensile and structural strength. UV, chlorine and salt water resistant. Variable application thickness possible. Broad color spectrum.

APPLICATION AREAS

General water isolation–water tanks, pools, swimming pools, ponds, pipes, pipelines , waste water treatments, manholes and sewer linings, roof coatings. Floors – industrial floors, hospitals, factory, parking lots , garage. Truck bed liners. Leisure industry- water parks, aquariums linings, play grounds, theme park and decorative applications.



CE
EN 1504 - 2





POLYUREA AL 1070

ALIPHATIC

100 % solid, fast curing, 2 component, UV resistance, aliphatic pure polyurea system. Its formulation is designed for maintaining high color stability and preventing discoloration where surfaces are exposed to sun light continuously. While it can be directly used on most surfaces, it also can be used as a top layer on epoxy, polyurethane and polyurea. The material must be applied utilizing high pressure, heated plural component spray proportioning equipment.

FEATURES

Excellent UV resistance. 100% color stability. Fast reactivity and fast return to service time. 100% solid, VOC free, no odor. Very good tensile and structural strength. Anticorrosive. High Hydrolysis resistance. Excellent temperature stability. Seamless and jointless coating with high water resistance. Temperature and moisture insensitivity. Excellent adhesion on concrete, steel, aluminum, plastics, wood, etc. Variable application thickness is possible. Broad color spectrum

APPLICATION AREAS

Exterior coatings where color stability is required. Swimming pools and water parks. Roofs, garages and parking lots. Airports, shipyards and marina. Wind energy plants. Amusement parks and playgrounds. Decorative designs. Furniture industry



POLYUREA 1045

ECO PURE

Very fast set, rapid curing, flexible, two component, economic pure polyurea coating system derived from a reaction of an isocyanate prepolymer and an amine terminated resin blend. The system is designed as a waterproofing and floor protective coating for concrete, metal, wood, ceramic, geotextile and PU foam substrates. The material must be applied utilizing high pressure, heated plural component spray proportioning equipment.

FEATURES

Fast reactivity and fast return to service time. Seamless coating. 100 % solid, VOC free, no odour. Very good tensile and structural strength. Excellent thermal stability. Excellent chemical resistance. Excellent impact and abrasion resistance. Excellent adhesion on concrete, steel, aluminium, fibres, wood, foam etc. Excellent flexibility. Temperature and moisture insensitive. UV, chlorine and saltwater resistant. Variable application thickness possible. Broad colour spectrum.

APPLICATION AREAS

General waterproofing and anticorrosion applications- tanks, pools, swimming pools, ponds, pipes, pipelines, roof, balcony and terrace coatings. Floors- industrial floors, hospitals, factories. Construction- roads, bridge decks, airports, line striping. Marine industry- ship's underwater part and ship's decks protection and ship docks. Leisure industry- water parks, aquariums linings, playgrounds and decorative applications. On thermal insulation products for waterproofing (polyurethane foam, EPS, XPS etc.)



POLYUREA HP 1044

ABRASION RESISTANT POLYUREA

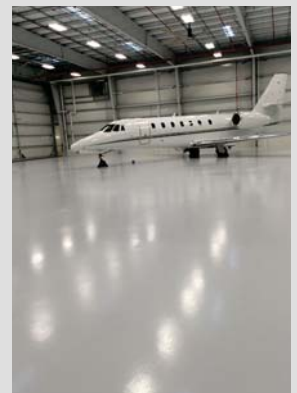
Very fast curing, two component, aromatic, pure polyurea system derived from a reaction of an isocyanate prepolymer and an amine terminated resin blend. It is a high performance product designed especially for industrial applications where high abrasion, chemical and corrosion resistance is a priority. For waterproofing and protecting purposes, this product can be applied on materials like concrete, metal, wood, ceramic and many other substrates. The material must be applied utilizing high pressure, heated plural component spray proportioning equipment.

FEATURES

Excellent impact and abrasion resistance. Fast reactivity and fast return to service time. Seamless coating. 100% solid, VOC free, no solvents. Environmentally friendly. Very good tensile and structural strength. Excellent chemical resistance. Excellent impact and abrasion resistance. Excellent thermal stability. Excellent adhesion on concrete, steel, aluminum, fibers, wood, foam etc. Excellent corrosion protection. UV, chlorine and saltwater resistant. Variable application thickness is possible. Broad color spectrum.

APPLICATION AREAS

It is used in where high chemical and mechanical properties are required as: Industrial & manufacturing facilities, storage, load and high traffic areas. Wastewater infrastructure. Roads, bridge decks, railways, tunnels and truck bed liners. Mining containment, process equipment and distribution. Primary & secondary containments. Power plants , refineries, oil and gas industry. Cargo containers. Parking lots and garages. Cold storage facilities, loading docks and ramps.



POLYUREA FA 1044

POTABLE WATER & FOOD CONTACT APPROVED

Very fast curing, 2-component aromatic pure polyurea system, 100% solid, flexible coating derived from a reaction of an isocyanate prepolymer and an amine terminated resin blend. This product has been approved for potable water and food contact and especially designed to protect potable water tanks and pipes. The material must be applied utilizing high pressure, heated plural component spray proportioning equipment.

FEATURES

Suitability for contact with drinking water and food. 100% solid, VOC free, no odor. Does not contain catalyst. Fast reactivity and fast return to service time. Excellent temperature stability. Seamless and jointless coating with high water resistance. Excellent adhesion on concrete, steel, aluminum, wood, etc. Excellent flexibility. No sensitivity to temperature and humidity. Perfect endurance to chemicals. Very good resistance to impact and corrosion. Very good tensile and structural strength. Variable application thickness is possible.

APPLICATION AREAS

Potable water storage facilities and tanks. Potable water pipes. Food production and processing plants. Cold storages. Rain storage facilities and sedimentation tanks. Filtration systems. Swimming pools, amusement parks and aquariums



POLYUREA FR 1044

FIRE RETARDANT

Very fast curing, 2-component aromatic pure polyurea system, 100% solid, flexible coating derived from a reaction of an isocyanate prepolymer and an amine terminated resin blend. It's developed for applications which require fire retardant and flame resistant coating. Especially designed to protect and coat concrete, metal, wood, ceramic, geotextile substrates. The material must be applied utilizing high pressure, heated plural component spray proportioning equipment.

FEATURES

Fire resistant system. 100% solid, VOC free, no odor. No catalyst. Fast reactivity and fast return to service time. Excellent thermal stability. Seamless and joint less coating with water resistance. Excellent adhesion on concrete, steel, aluminum, fibers, wood, geotextiles etc. Excellent flexibility. Temperature and moisture insensitive. Excellent chemical resistance. Very good impact and corrosion resistance. Very good tensile and structural strength. Variable application thickness possible. Broad color spectrum

APPLICATION AREAS

Floors where fire retardant is necessary , industrial facilities, hospitals, factories, parking lots, garage, transportation. Construction - airports, line striping, ship decks, ship ports and canals. High abrasion applications – oil and gas industry, refineries, petrochemical industry, mining, secondary containment. Energy industry. Waste water treatment plants , tank coating, secondary storage tanks.



POLYUREA AS 1044

ANTI-STATIC POLYUREA

Very fast curing, two component, aromatic, flexible, pure polyurea system coating derived from a reaction of an isocyanate prepolymer and an amine terminated resin blend. This product is especially applied to surfaces to build up antistatic coatings to avoid risks of ignition due to electrostatic charge. It can be applied to areas where flammable liquids of danger classes are stored. For protecting and coating purposes, this product can be applied on materials like concrete, metal, wood, ceramic and PU foam. The material must be applied utilizing high pressure, heated plural component spray proportioning equipment.

FEATURES

Antistatic coating. Fast reactivity and fast return to service time. Hardens just in 10 second. Fast application time; one worker can cover 1000m2 area in 2mm thickness in 1 day. 100% solid, VOC free, no solvents. Environmentally friendly. Excellent thermal stability (-25°C-120°C). Very good tensile and structural strength. Excellent chemical resistance. Long lasting (minimum 25 years). Excellent impact and abrasion resistance. Excellent adhesion on concrete, steel, aluminum, fibers, wood, foam etc. Excellent flexibility. Excellent crack bridging properties. Temperature and moisture insensitive. Excellent corrosion protection. UV, chlorine and saltwater resistant.

APPLICATION AREAS

Electric transformers. Thermal power plants. Manufacturing facilities and storage areas. Schools. Industrial cold rooms. Laboratories. Hospitals and operating rooms. Parking lots and garages. Oil and gas industry.



POLYUREA FX 1044 **ENHANCED FLEXIBILITY**

Very fast curing, two component and elastomeric pure polyurea system. In addition to having basic properties of polyurea systems properties, it has a lot more elasticity to be able to use where elasticity is essential like in metal roof and geotextile coatings. It can be used with confidence in both interior and exterior applications. The material must be applied utilizing high pressure, heated plural component spray proportioning equipment.

FEATURES

Excellent flexibility and elongation. Fast reactivity and fast return to service time. Seamless coating. 100% solid, VOC free, no solvents. Environmentally friendly. Very good tensile and structural strength. Excellent adhesion on concrete, steel, aluminum, fibers, wood, foam etc. Excellent flexibility. Excellent crack bridging properties. Temperature and moisture insensitive. UV, chlorine and saltwater resistant. Variable application thickness is possible. Broad color spectrum.

APPLICATION AREAS

General waterproofing applications where high flexibility necessary as: Pools and storage tanks. Roofs, terraces and garages. Geotextile coating. Decorative applications. Water and amusement parks.



POLYUREA PA 1070 **POLYASPARTIC SOFT (TOPCOAT)**

Two component, rapid curing, UV resistant, Excellent color stable new generation polyaspartic based polyurea surface coating system for both decorative and protective applications. On account of the UV and color fast properties, it is ideal for use as thin layer coating and clear topcoat sealer for surface protection on existing coating systems. After the product is completely cured, it forms a glossy, smooth top layer with high scratch, abrasion and chemical resistance. Polyaspartic system can be applied in a single or multiple coats by roll, brush or squeegee to a variety of substrates including concrete and metal.

FEATURES

Excellent UV light resistance. Long working and gel time. Fast reactivity and cure time (applicable to pedestrian traffic after 3-4 hours). Rapid return to service (return to service in 24 hours). Easy application and spreading. Excellent adhesion to concrete and metal substrates. High abrasion, impact and corrosion resistance. Excellent chemical resistance. Resistant to chlorine and saltwater. High hydrolysis resistance. Perfect thermal stability. Available in transparent and several RAL colours.

APPLICATION AREAS

As top layer over polyurea coatings where UV resistance and color stability is required. Clear sealer over decorative concrete surfaces. Swimming pools, terraces and garage floors. Restaurant and hospital flooring. Water parks, amusement parks and decorative applications.



POLYUREA PA 1005 **POLYASPARTIC HARD (TOPCOAT)**

Two component, rapid curing, UV resistant, Excellent color stable new generation polyaspartic based polyurea surface coating system for both decorative and protective applications. On account of the UV and color fast properties, it is ideal for use as thin layer coating and clear topcoat sealer for surface protection on existing coating systems. After the product is completely cured, it forms a glossy, smooth top layer with high scratch, abrasion and chemical resistance. Polyaspartic system can be applied in a single or multiple coats by roll, brush or squeegee to a variety of substrates including concrete and metal.

FEATURES

Excellent color stability and gloss retention. Excellent UV light resistance. Long working and gel time. Fast reactivity and cure time (applicable to pedestrian traffic after 3-4 hours). Rapid return to service (return to service in 24 hours). Easy application and spreading. Excellent adhesion to concrete and metal substrates. High abrasion, impact and corrosion resistance. Excellent chemical resistance. Resistant to chlorine and saltwater. High hydrolysis resistance. Perfect thermal stability. Available in transparent and several RAL colours.

APPLICATION AREAS

As top layer over polyurea coatings where UV resistance and color stability is required. Clear sealer over decorative concrete surfaces. Swimming pools, terraces and garage floors. Industrial and commercial flooring. Restaurant and hospital flooring. Water parks, amusement parks and decorative applications. Aircraft hangers. Deck coatings. Wind energy plants.



2K SPRAY FOAM

2K polyurethane foam system which is designed for spray applications. The material must be applied with a high pressure plural component spray polyurethane machine. Mobile application of system has advantages in construction site and high building applications. Because of spray and on-site application, it takes the shape of the surface and because of that property it can be applied any type of area and surface.

FEATURES

Its main application areas are; poultry farms, cold storage tanks, terraces, roofs, basement ground floors, ceilings, external walls insulation, ground insulation.

APPLICATION AREAS

Generally application is done with 25-50 kg/m³ density polyurethane systems. Since it prevents bacteria growth and it is approved for food contact, specially can be applied for food storage tank insulation and animal shelters. Based on DIN 4102-1 standard can be classified as B2 fire resistance class.



EN 14315-1:2013

SPR 210 2K SPRAY FOAM

Spray-in-place, two-component, low density, open celled, 100% water-blown polyurethane foam. It barricades the indoors from the outside climate, creating thermal, air and moisture isolation.

FEATURES

It provides a continuous, protective air barrier that helps to minimize air intrusion, and provides exceptional performance in the reduction of heat transfer.

APPLICATION AREAS

Wall cavities
Floor assemblies
Ceiling assemblies
Roof assemblies (interior)
Attics (vented and unvented)
Crawl spaces (vented and unvented)



EN 14315-1:2013

SPR 230-S CLOSED CELL, SMOOTH SURFACE, RIGID SPRAY PU FOAM

Two component (polyol - isocyanate), rigid spray polyurethane foam system with closed cell structure which is applied with high pressure and heated special spray machines for heat insulation purpose. Due to its smooth surface, the waterproofing material consumption to be applied on it decreases about 25-40%.

FEATURES

Two component. Closed cell structure. B2 (E) fire reaction. Easy and high application speed (~ 1000 m² per day). Less water insulation material consumption due to smooth surface. Seamless, no heat bridge. Self-adhesive properties on many surfaces (concrete, wood, metal etc.). Does not grow insect and fungus. Excellent thermal insulation for a long time (70-80 years). High energy saving. Water vapor permeability. Excellent mechanical properties. Low storage and transportation cost. Partial sound insulation.

APPLICATION AREAS

Foundation and curtain concrete, floor, roof, wall.



EN 14315-1:2013

SLR 230/235/240

AKFIX SLR 230 / 235 / 240 is a polyol mixture that contains catalyst, blowing agent and additives. It is used for solar water heater and boiler insulation. Because of its excellent bonding strength, it can adhere to metal with no adhesive.



FEATURES

- B2 fire class
- Closed cell structure
- High adhesion strength for metal surface
- Free rise density choice between 30 kg/m³ - 40 kg/m³
- No thermal bridge, seamless
- Have lowest value than other materials

APPLICATION AREAS

- Hot water tank of solar energy system
- Boiler



PUR PRIMER 90 PU PRIMER



Features

- Excellent adhesion to absorbent surfaces.
- Highly elastic to meet surface movements.
- Easy application (by roller or airless gun).
- Resistant to accumulated water and frost.
- Economical.

Application Areas

It can be used as a primer especially for concrete surfaces before application of polyurethane based waterproofing membranes and sealants like Akfix 450

Available Sizes

Package : 15kg

PRIMER 80 MOISTURE TOLERANT EPOXY PRIMER



Features

- Excellent adhesion to damp concrete surfaces.
- Easy application
- Perfect resistance to water, freeze, humidity and harsh weather conditions.
- Can be used indoor and outdoor applications.
- Economical.

Application Areas

It can be used before polyurea, polyurethane and epoxy coating applications for humidity and water vapor prevention on damp concrete surfaces.

- To avoid osmosis bubbles that formed via the effect of the pressure from the negative side.

Available Sizes

Component A : 15 kg
Component B : 5 kg

PRIMER S80 STANDARD EPOXY PRIMER



Features

- Excellent adhesion to damp concrete surfaces.
- Easy application
- Perfect resistance to water, freeze, humidity and harsh weather conditions.
- Can be used indoor and outdoor applications.
- Economical

Application Areas

It can be used before polyurea, polyurethane and epoxy coating applications for humidity and water vapor prevention on damp concrete surfaces.

- To avoid osmosis bubbles that formed via the effect of the pressure from the negative side.

Available Sizes

Component A : 15 kg
Component B : 5 kg

PRIMER M80 EPOXY PRIMER FOR METAL



Features

- Excellent adhesion to metal surfaces
- Protect metal from corrosion
- Resistant to acids, bases, oils, gasoline, solvents and salt water
- Perfect resistance to water, freeze, humidity and harsh weather conditions
- Easy application
- Can be used indoor and outdoor applications
- Long working time and pot life

Application Areas

Akfix Primer M80 designed as an anticorrosive & anti-rusting primer on iron and steel substrates prior to the application of waterproofing membranes and coatings.

- Application examples include protection of silos, steel bridges, fences, metals roofs, pipes, reinforcement bars etc.

Available Sizes

Component A : 15 kg
Component B : 3 kg

PRIMER T80 TRANSPARENT EPOXY PRIMER



Features

- Low viscosity for maximum penetration
- UV stable, can be used outdoor applications
- Easy application
- VOC free and low odor
- Excellent adhesion to common substrate materials
- Excellent bonding for polyurea, epoxy and polyurethane coating finishes
- Seals pores and capillaries

Application Areas

- Primer coat for decorative resinous flooring systems
- Clear may be used as a primer coat over dyed or stained concrete
- General purpose primer for subsequent finish of coating products and flooring installation.
- Can be used either as a coating or filled with paint chips, marble chips and colored chips to provide color schemes or patterns

Available Sizes

Component A : 8kg
Component B : 4 kg

PRIMER W80 WATERBASED EPOXY PRIMER



Features

- Low viscosity for maximum penetration
- Easy application
- VOC free and low odor
- Excellent adhesion to common substrate materials
- Barrier properties against moisture and water
- Seals pores and capillaries
- Convenient recoat properties
- Can be used indoor and outdoor applications

Application Areas

- Primer before polyurea, polyurethane and epoxy coating applications
- General purpose primer and moisture vapour barrier beneath flooring installation onto porous substrates
- Primer for ceramic tiles
- To avoid osmosis bubbles that formed via the effect of the pressure from the negative side

Available Sizes

Component A : 3 kg
Component B : 2 kg

PRIMER WG80 WINTER GRADE EPOXY PRIMER



Features

- Excellent adhesion to damp concrete surfaces.
- Easy application
- Perfect resistance to water, freeze, humidity and harsh weather conditions.
- Can be used indoor and outdoor applications.
- Economical

Application Areas

- It can be used before polyurea, polyurethane and epoxy coating applications for humidity and water vapor prevention on damp concrete surfaces.
- To avoid osmosis bubbles that formed via the effect of the pressure from the negative side.

Available Sizes

Component A : 11 kg
Component B : 5 kg

PRIMER EP80 EMPRENYE EPOXY PRIMER



Features

- Low viscosity
- High penetration ability
- Ideal surface penetration before coating
- Low viscosity

Application Areas

- Impregnation primer that fill capillary pores on concrete surfaces
- Surface preparation primer for epoxy, polyurethane and polyurea floor coverings

Available Sizes

Component A : 21 kg
Component B : 3 kg

PU DF 25 2K POLYURETHANE DILATATION FILLER

Self-leveling polyurethane sealant ideal for horizontal applications. Its elasticity allows it to absorb continual movements of the structure caused by thermal changes without problems of cracking.



FEATURES

Two component. Easy to mix. Fast cure. Self-leveling consistency, easy to apply in horizontal joints. Possesses permanent elasticity. High adhesion strength. Capable of ±25% joint movement. Paintable.

APPLICATION AREAS

Used for sealing of horizontal joints. Interior and exterior. Expansion joints between many different construction materials. Industrial floors. Driveways/ Garages. Sidewalks.



JH 1080 POLYUREA JOINT SEALANTS

Self-leveling, 100% solid, flexible, two component, 1:1 volumetric ratio, rapid curing polyurea elastomer joint and crack filler. Cures rapidly and consistently in applications ranging from -10°C to 50°C. Applications can be reopened to vehicle or foot traffic in 1 hour. Recommended time of cure of concrete minimum 30 days prior to installing joint filler or joint sealant.

FEATURES

Concrete crack repair and joint filler on; Airports. Roofs. Parking lots and garages. Industrial facilities. Warehouse floors. Manufacturing facilities. Bottling and canning facilities. Food processing facilities. Cold storage facilities.

APPLICATION AREAS

100% solid, VOC free, no solvents. Fast reactivity. Returns project to service in 60 Minutes. Temperature and moisture insensitivity. Excellent thermal stability. Very good tensile and structural strength. Resistant to petrochemicals and chemicals.



POLYUREA HM 80

HANDMIX POLYUREA

Akfix HM 80 is a superior hand mixable, self leveling, flexible, two component polyurea product with a retarded pot life. It is a high quality joint filler, coating and crack repair material in applications that are time critical. It works well in adverse temperature conditions and the application can be reopened to foot traffic in one hour. The product is ideal for use in cold storage facilities, freezers, and food processing plants where time and temperature are serious concerns.

FEATURES

100% solid, VOC free, no solvents. Hand mixable and applicable. Fast reactivity. Return project to service in 60 minutes. Non sensitivity to temperature and humidity. Remains flexible in cold temperatures. Very good tensile and structural strength. Resistant to petrochemicals and chemicals.

APPLICATION AREAS

Small repairs on existing polyurea. Concrete crack and repair. Concrete joint filler. As a floor coating on various places like. Airports. Parking lots and garages. Industrial facilities. Warehouse floors. Manufacturing facilities. Food processing facilities. Cold storage facilities.



RM 301

EPOXY REPAIR MORTAR

Epoxy repair mortar; It is an epoxy based, two component, solventless, high impact and compression resistance, high abrasion resistant repair and mounting mortar. It has excellent adhesion force to concrete and steel. Due to its special formulation, it has a thixotropic structure that does not flow on vertical floors.

FEATURES

Excellent adhesion force to concrete and steel. Does not contain solvent. High abrasion and impact resistance. High mechanical and chemical resistance. Can be applied without primer.

APPLICATION AREAS

Industrial floors. Airport concrete runways. Repair of highways joints. Maintenance and repair marine structures. To fill gaps between the bridge supports and concrete columns with steel reinforcement. Surface repair before coating applications. Filling and repair of concrete building elements.



Aerosol

Products

www.Akfix.com



Creates Permanent Solutions

A40 MAGIC

CORROSION INHIBITOR, LUBRICANT AND MULTI PURPOSE PROTECTOR SPRAY



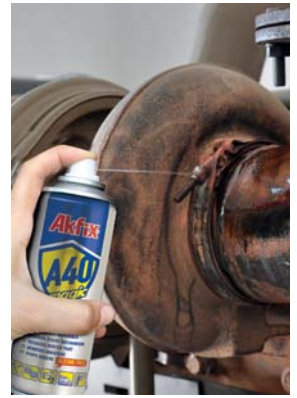
Corrosion Inhibitor, Lubricant and Multi Purpose Protector aerosol Spray. It's special formula combines many properties such as cleaning, lubricating, loosening rusted part, driving out moisture. It can be used in industrial, home and daily labors.

FEATURES

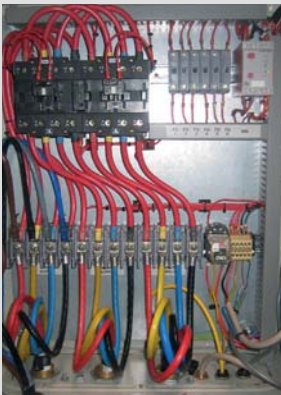
Ultimate penetrating ability. Loosens rusted or corroded bolts, nuts, cables and any other fasteners. Greases and loosens door and window hinges, locks, and other fittings. Decreases frictions and stops squeaks of pedals, chairs, windows, faucets and hinges. Does not contain silicone and any dirt trap additives. Drives the moist out of the surface and dries it out thus provides longtime lubricating effect. Protects metal parts against rust. Provides maintenance by penetrating into surface and protects it against dirt. Dissolves tar, gum, adhesive etc. Permeates into grease and dirt and creates a protective film layer on the surface.

APPLICATION AREAS

In all fittings, door and window mechanisms, locks, handles, hinges. For annulling humidity on metallic surfaces of bikes, motorbikes, small motor vehicles, electronic contacts and other home tools such as drills, jigsaws, etc. For loosening and activating rusted and jammed mechanisms. Can be used as protective on surfaces vulnerable to water and rust. For dissolving adhesive materials like tar, gum, adhesive tapes etc. Can be used for cleaning and maintenance of weapons.



Scan QR code for product video.



A60

ELECTRICAL CONTACT CLEANER

A product designed to remove flux and other surface contaminants. The product evaporates quickly from the surface without leaving any residue. It is designed for cleaning grease, dirt etc. from electric, electronic equipment.

FEATURES

Fast cleaning action for removal of flux traces, light oils, finger prints and other contaminants. Periodic planned application prolongs the life expectancy of components. Non-conductive and non-corrosive. Evaporates completely, with a very thin protective layer. Safe for all metal surfaces, most rubbers, plastics and coatings. It is recommended to be tested on sensitive plastics, adhesive-mounted or stressed parts. Convenient to use 360° (upside-down).

APPLICATION AREAS

Calculators. Computers. Digital Equipment. Electronic Ignitions. Navigation. Equipment. Printed Circuits. Radars. Radios. Switches and Relays. Circuit breakers. Alarm and signal systems. Terminals. Plugs and sockets.



A70

PENETRATING OIL SPRAY

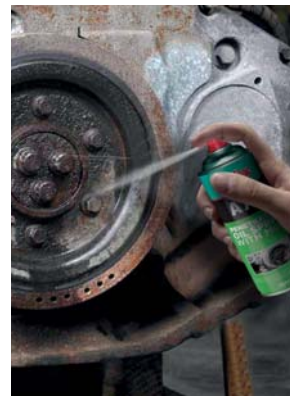
High performance penetrating oil enriched with MoS₂.

FEATURES

Excellent penetrating capability. Penetrates into hard-to-reach areas quickly. Loosen rusted parts and form a protective layer between metal surfaces. Diminish friction. Remove water and protects against moisture. Protects metal parts and surfaces from corrosion. Eases quick disassembly of mechanical components, fittings, assemblies, nuts and bolts and other close tolerance fasteners. Leaves a solid lubricating MoS₂ film. Reduces wear and facilitates future disassembly. MoS₂ reduces friction even elevated temperatures.

APPLICATION AREAS

Seized and rusted nuts and bolts. Locks and hinges. Screwed parts. Equipment disassembly. Corroded fasteners. Valves. Air tools. Chains and conveyors. Agricultural equipment.





A80 SILICONE LUBRICANT

Silicone based mould release agent. It shows perfect performance even at very high temperatures.

FEATURES

Due to its silicone content, provides long working life at high temperatures. Lubricates to reduce friction and eliminate squeaks in all, types of mechanical parts. The product repels water, protects and renews rubber surfaces. Anti-static and anti-corrosive. Does not leave residues. Insoluble in water. Non-toxic.

APPLICATION AREAS

As a cleaner and mould release agent in textile, plastic and rubber industries. Windshield wiper linkage. Interior hinges, slides or springs. Snow blower chutes.



A90 ANTI SPATTER SPRAY

Aerosol product that protects materials and surfaces in welding area against particles spattering during welding process. It ensures a perfect welding operation.

FEATURES

Anti-adhesion product for arc welding. Prevents the adhesion of "projections" on all treated surfaces. Suitable for protecting nozzles, weld units and tools. Non flammable after evaporation of the solvent.

APPLICATION AREAS

Nozzles and shrouds. Torches. Workpieces and parts. Jigs. Automatic and semi-automatic welding. Welding robots.



Scan QR code for product video.

A104 LABEL & STICKER REMOVER

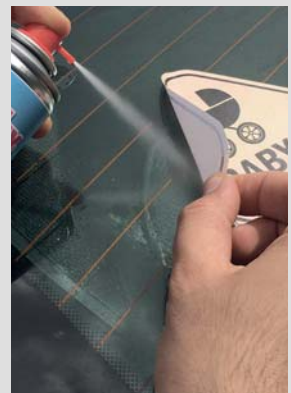
Natural orange oil extract developed for removing labels and stickers nice and easy. It can also be used as the ultimate degreaser because of its superficial solving power.

FEATURES

Directly penetrates to the surface and quickly dissolves adhesive residue from glass and painted surfaces. An easy solution for removing window stickers, bumper stickers, residue from tape, markers, crayons, lipstick, metal parts, motors, tools, printing presses and concrete and others. Safe to use on all nonporous automotive surfaces, metal, paint, bumpers, plastic, and glass windows. Does not damage automotive paint. Can be used to clean the annoying residue from sticky labels. Aerosol spray can allows quick and easy application. Works on many surfaces and has pleasant citrus scent. It also does not contain any CFC propellants, does not damage paintwork or plastics and can be applied to larger areas in minimal time.

APPLICATION AREAS

Safe to use on windows, leather, vinyl, fabric, auto bodies, painted surfaces, tools, plastic, metal and wood.



Scan QR code for product video.

Automotive

Repair, Care,
Protective
Products

www.Akfix.com



Creates Permanent Solutions



WINDSHIELD ADHESIVE AST POLYMER



Provides quick drive-away time and easy application without pre-heating for vehicles. It is an isocyanate-free, thixotropic, high modulus windshield adhesive based on AST Polymer technology.

FEATURES

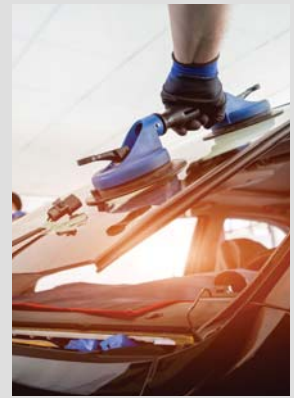
Flexible, secure sealing of vehicle windshields. Primerless application. Eco-friendly, free from isocyanate, solvent, acids and halogens. Very low VOC content. High and quick initial adhesion. One component, easy to apply, without the need of pre-heating. Fast curing, low odor, high modulus and non-sag properties.

APPLICATION AREAS

Ideal for glass replacement in automotive repair, such as windshields, rear glass, side glass and other stationary glass. Sealing and bonding of sunroof applications. Suitable for metal, steel, aluminum, glass, copper, zinc and fiberglass.

"Conforms to the requirements of VOC content specifications in LEED credit EQc4.1 "Low-emitting products" of SCAQMD rule 1168."

SHORE **A55**



PU WINDSHIELD ADHESIVE

One component, moisture curing polyurethane based adhesive for direct glazing in AUTOMOTIVE GLASS REPLACEMENT.

FEATURES

One component formulation. Good non-sag properties. Short cut-off string. Cold application. Fast curing - Rapid strength development. High mechanical performance. High Modulus. High initial bond strength. Can be overpainted.

APPLICATION AREAS

It is especially useful in bonding windshield glass into automotive frames.

"Conforms to the requirements of VOC content specifications in LEED credit EQc4.1 "Low-emitting products" of SCAQMD rule 1168."

SHORE **A55**



Scan QR code for product video.

PU WINDSHIELD PRIMER

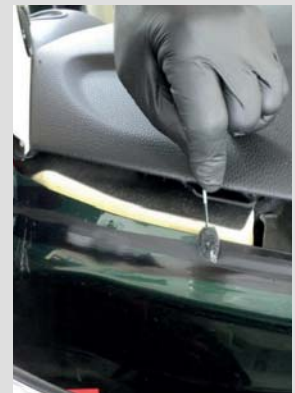
Black primer specifically designed for the ceramic band on vehicle glass. It ensures the complete protection of the adhesive by creating a barrier against harmful UV rays which can lead to the degradation of the adhesive. It is also an adhesion promoter.

FEATURES

One component. Fast drying. Protects urethane from harmful ultraviolet rays. Promotes urethane adhesion to automotive glass.

APPLICATION AREAS

For the treatment of bond faces prior to application of PU Windshield Adhesive. Can also be used as a general purpose primer which is used to promote adhesion to glass.





FAST CURE PU WINDSHIELD

One component, moisture curing polyurethane based adhesive for direct glazing in AUTOMOTIVE GLASS REPLACEMENT.

FEATURES

One component formulation. Good non-sag properties. Short cut-off string. Cold application. Fast curing – Rapid strength development. High mechanical performance. High Modulus. High initial bond strength. Can be overpainted.

APPLICATION AREAS

It is especially useful in bonding windshield glass into automotive frames.

"Conforms to the requirements of VOC content specifications in LEED credit EQc4.1 "Low-emitting products" of SCAQMD rule 1168."

SHORE **A55**



R75 SPRAYABLE SEALANT

Multipurpose one component high performance AST Hybrid polymer based adhesive and sealant for general industry, assembly and automotive car body repair.

FEATURES

Remains flexible without bubbling, shrinking or cracking. Excellent adhesion to metals, primers and top coats. Resistant to ageing, moisture, weathering and UV. Spotweldable if not cured. Does not require preheating. Good mechanical properties. Non corrosive towards metals. Free of isocyanate and silicone. Good paint compability. Optimal working time. Direct to metal. Sag resistant.

APPLICATION AREAS

Suitable for direct spray applications as surface adhesive or for beading applications as seam adhesive and sealant. Sealing of welded and overlap seams in the construction and automotive industry. Elastic bonding between metal, plastic, glass and other materials. For coating inside car wings, boots and bonnets and even as underbody coating. For prevent corrosion and damp acoustic vibrations as well as mechanical damages.



HT300 GASKET MAKER RTV SILICONE

High-performance silicone sealant developed for sealing, bonding and repairing works where heat resistance is required. It is an ideal sealant for high temperature construction applications. It reacts with atmospheric moisture to produce a tough, elastic silicone.

FEATURES

Excellent heat resistance after curing up to 250 °C permanently and up to 300 °C temporarily. Acetox cure, RTV silicone. 100% silicone. Fast cure, high strength. Resists to mechanical enforcement after curing. Remains flexible at low (-40 °C) and high (+250 °C) temperatures. Will not crack, shrink or become brittle. One component. Conforms to the requirements of VOC content specifications in LEED credit EQc4.1 "Low-emitting products" of SCAQMD rule 1168.

APPLICATION AREAS

Sealing and bonding applications in automotives. On heating systems and ovens for sealing/ tightness. Sealing and bonding in stoves. In heating devices. Gaskets in pumps and motors. In sealing chimneys. Other bonding and sealing applications where parts must perform at high temperatures.



A114 CARB & CHOKE POLISH FOAM

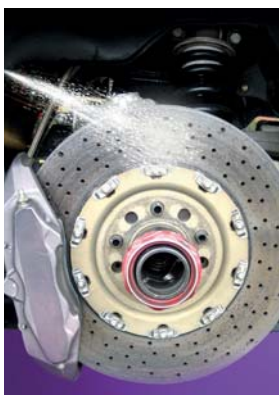
Product especially developed for improving carburetor performance without disassembling. Designed for cleaning visible carburetor and choke deposits such as sludge, gum and varnish.

FEATURES

Maximizes carburetor and fuel system performance to ensure maximum fuel economy. Ideal for all kind of automobile, truck and marine engines. Doesn't leave sticky residue. Effectively cleans clay, gum and varnish. Especially developed for improving carburetor performance without disassembling. Doesn't harm oxygen sensors or catalytic converters. Doesn't contain any harmful gas to the ozone layer. The aerosol can be used at 360 degrees and provides a powerful cleaning feature and offers the advantage of easily cleaning the carburetor and throttle.

APPLICATION AREAS

Gasoline and fuel-injection engine, Carburetor visible parts, Heat Risers, Throttle and choke, Positive Crankcase Ventilating System, Automatic Chokes, Exhaust Gas Recycling Valve (EGR), Crankcase Breather Element, Cleaning intake air valves and idle valves, General Purpose Cleaner For Non-Painted Surfaces.



A110 BRAKE AND CLUTCH CLEANER

Powerful cleaning aerosol is used to remove oil, grease, dirt and dust from brakes and clutches, aiding in the elimination of brake squeal and clutch slip caused by glazing and contamination. Brake cleaner helps brakes last longer and perform better.

FEATURES

Effectively removes the deposits like leaking brake fluid, grease, oil and hardened contaminations. Eliminates dust from brake and clutch parts. Reduces disc-brake squeal and clutch chatter. Can be applied without disassembly, saving time and reducing maintenance costs. Evaporates quickly. Leaves no residue. Excellent penetration. Stable, non-staining and non-corrosive to metals. Aerosol is equipped with a 360° (upside-down) spray valve and extension tube for added convenience.

APPLICATION AREAS

Perfect for cleaning and degreasing:

- Brake linings
- Cylinders
- Disc brake pads
- Wedge brakes
- Calipers
- Drums
- Brake shoes
- Discs
- Springs
- Clutch discs



Scan QR code for product video.

A107 TYRE REPAIR KIT

Eliminates the need for an immediate tyre change, sealing and inflating your tyre within seconds.

FEATURES

No need for lifting- jack or any other tools. Finds the hole in the tyre and seals it. Water based. Can be cleaned easily with the water after application. Does not harm the tyre valve. Instantly repairs punctured tyres, without removing the wheel. Inflates the tyre (up to a pressure of 1,2 to 2,5 bar), so the vehicle can be ride after the application at a moderate speed. Harmless to tyres and wheels.

APPLICATION AREAS

For cars, motorcycles, caravans and trailers. For tubeless tyres or tyres with inner tubes.



Scan QR code for product video.

A117 TYRE CLEANER & POLISH FOAM



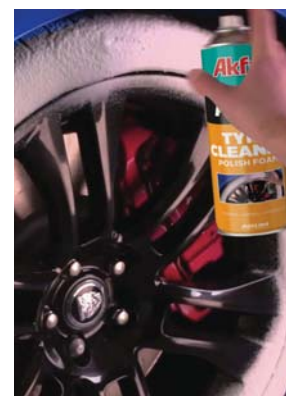
Specially developed for cleaning, treating and protecting tyres as well as enhancing their appearance in one process. Enhances the appearance of weathered tires by restoring the rubber surface

FEATURES

Easy to use. Does not contain flammable solvents. Non-acid formula. Self-acting foam removes residues and dirt. Makes tires look like new. Cleans and cares.

APPLICATION AREAS

Suitable to use on all kind of vehicle tires like bicycles, motorcycles, automobiles, minibuses, buses, trucks, lorries etc.



A115 ENGINE CLEANER

Excellent product developed against engine oil, grease and stubborn dirt.

FEATURES

It doesn't damage any parts in engine. Provides a brilliant view and protection to the engine besides the cleaning. Thanks to its superior content, it offers to penetrate and remove the stubborn dirt, oil and grease on the engine. Contains ozone-friendly propellants that do not harm the environment. Harmless for electronic circuits. It easily reaches, penetrates and cleans the most difficult areas. Does not damage rubber, plastic and painted surfaces. Does not contain silicone. It contains citrus essences.

APPLICATION AREAS

Car Engines, Motorcycles, Machines, It is suitable for all types of engines, such as lawn mowers.



Scan QR code for product video.

A120 ANTI GRAVEL CAR UNDERBODY PROTECTION

A modified alkyd resin-based surface protectant, especially developed for the protection of areas where automobiles and commercial vehicles can be exposed to various impacts such as stone bumps.

FEATURES

Creates a hard, textured surface that prevents chips and abrasions from stones and impurities. Compatible with OEM textures. Very high wear resistance. Suitable for oven drying. Easy sanding after drying.

APPLICATION AREAS

Can be applied on steel, aluminum, galvanized surfaces, stainless steel, plastic and epoxy coated surfaces. Protecting the wheel wells, rocker panels and undercarriage from inevitable wear and keeping the original appearance.



Spray Paint

Products

www.Akfix.com



Creates Permanent Solutions



SPRAY PAINT

Designed for numerous application possibilities. Special spray system, which is even used by famous graffiti artists. Available in a broad range of the best-selling colours, mainly matching to RAL.

FEATURES

High-grade nitro-combi quality. Very good coverage. Excellent adhesion on many surfaces. Good flow, smooth surface. Quick-drying. Suitable for indoor and outdoor applications. The surface is polishable. Weather-resistant, light-proof, UV-resistant. Scratch-, shock- and impact-resistant. Quick-drying (The drying time depends on surrounding temperature, air humidity and thickness of the applied coat).

APPLICATION AREAS

Suitable for wood, metal, paper, glass or paintable hard plastics as well as for many textiles for any variety of designing applications. Also applicable for the designing of finery, concrete and natural stone.



METAL MATT EFFECT SPRAY PAINT

Ideal for handicraft works on wood, metal, glass, cardboard and plants. Bronze Spray is particularly suitable for decorative indoor uses and indispensable for stand constructors, decorators, and flower-arrangers. Metal matt spray is also a good choice for handicraft work at home or in courses and seminars.

FEATURES

Long-term high coverage and filling power. Excellent adhesion. Good flow, smooth surface. Quick-drying (The drying time depends on surrounding temperature, air humidity and thickness of the applied coat). Suitable for use on indoor objects. Resistant to water and common household cleansers. Effect of gloss can change by intense rubbing or wiping.

APPLICATION AREAS

For handicraft works on wood, metal, glass, cardboard and plants. Suitable for decorative indoor uses.



METAL GLOSSY EFFECT SPRAY PAINT

Gives a long-term look similar to polished chrome and gold to smooth surfaces. Not weather-resistant. Not resistant to abrasion, therefore not suitable to spray on objects for daily use.

FEATURES

Resistant to water and common household cleansers. Effect of gloss can change by intense rubbing or wiping. Colour of contents similar to cap. Very good coverage. Very high gloss. Excellent adhesion. Good flow, smooth surface. Quick-drying (The drying time depends on surrounding temperature, air humidity and thickness of the applied coat).

APPLICATION AREAS

Suitable for all smooth surfaces like metal, wood, glass and many coatable plastics. Indispensable for constructors of fair booths, decorators, florists etc., but also for handicrafts at home, in courses and seminars.





BUMPER SPRAY PAINT

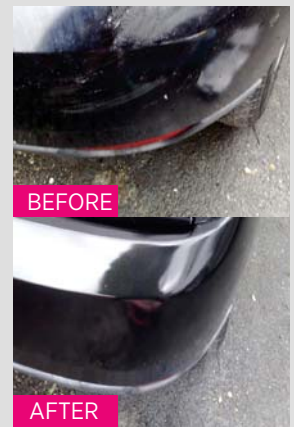
Scratched and weathered bumpers are a thing of the past. It is used to repair and improve plastic bumpers while still maintaining the original structure. The spray can be directly applied to plastic surfaces without the need to primer and gives synthetic surfaces a silky shine.

FEATURES

Long-lasting shine and colour. Keeps the bumper's original structure. Scratch and shockproof. Easy to use. Fast drying time (The drying time depends on surrounding temperature, air humidity and thickness of the applied coat). Excellent coverage. Excellent adhesion. Suitable for many other synthetic materials.

APPLICATION AREAS

It can be used to repair and improve plastic bumpers while still maintaining the original structure. Suitable for decorative indoor uses. Gives synthetic surfaces a silky shine.



INOX SPRAY PAINT

Designed for all lacquer finishes and repairs in the colour of stainless steel, for colour adaptations in the surrounding field of stainless steel surfaces (test the color!).

FEATURES

Very good coverage. Excellent adhesion on many surfaces. Good flow, smooth surface. Suitable for indoors and outdoors applications. Weather-resistant, light-proof, UV-resistant. Scratch-, shock- and impact-resistant. Resistant to engine oils, diluted cleansers etc. Quick-drying (The drying time depends on surrounding temperature, air humidity and thickness of the applied coat).

APPLICATION AREAS

For all lacquer finishes and repairs in the colour of stainless steel, for colour adaptations in the surrounding field of stainless steel surfaces (test the color!). Application is possible on the most surfaces e. g. metal, wood, glass, ceramics, paper, stone etc.



ENAMEL SPRAY PAINT

Designed for quick and easy repair of irritating scratches or similar small damages on white enamel surfaces such as bath-tubs, sinks, toilet bowls, instantaneous water-heaters, and refrigerators.

FEATURES

For white glossy enamel surfaces. Hard, durable surface. Very good coverage. Excellent adhesion. Good flow, smooth surface. Scratch-, shock- and impact-resistant. Quick-drying (The drying time depends on surrounding temperature, air humidity and thickness of the applied coat).

APPLICATION AREAS

Suitable for quick and easy repair of irritating scratches or similar small damages on white enamel surfaces such as bath-tubs, sinks, toilet bowls, instantaneous water-heaters, and refrigerators. Not suitable for large-area repairs such as wash-bowls, bathtubs.





A108 PAINT REMOVER

An aerosol stripper which removes paint from most types of surfaces. The convenient aerosol can be easily sprayed to hard-to-reach areas and does not drip or run.

FEATURES

Aggressively strips even the toughest paints. Convenient spray is easy to use. Ease of use saves time. No wastage due to accurate spray. Spray gets into hard-to-reach areas. Clings well to vertical surfaces. Thick formula clings to extend contact time. Easy clean up.

APPLICATION AREAS

Any metallic surface with mild to heavy paint remains. Removes acrylics, epoxies, lacquers, adhesives and most other automotive finishes. Light industrial environments. Should not be used on fiberglass, plastics, styrene related plastics, vinyl, linoleum.



INDUSTRIAL REPAIR, CARE, PROTECTIVE PRODUCTS



C12 METAL POLISH

Polishes every kind of gold, silver, copper, chrome, brass, bronze, aluminum, platinum from tarnishing and can make a protective film on the surface.

FEATURES

Excellent penetrating capability. Diminish friction. Removes water and protects against moisture. Protects metal parts and surfaces from corrosion.

APPLICATION AREAS

It is well used for cleaning and polishing auto parts, kitchenware, tiles, fiberglass.



INDUSTRIAL WIPES



Industrial strength hand cleaning wipes that are capable of removing oil, grease, paint, ink and adhesives. The textured side of the wipe will gently but efficiently remove all ingrained contamination. The smooth side of the wipe will effectively retain contamination and will prevent re-soiling of the hands. Hands are clean and dry in one application, all without the use of water.

FEATURES

Non-hazardous to user or environment. High absorbency – contamination stays on wipe. Textured material assists cleaning power. Optimum dose of cleaner applied to the wipe. Excellent cleaning power – even on tough contaminants. Convenient, simple and safe to use. Contains Aloe Vera for moisturizing your skin for protection. Leaves no residue.

APPLICATION AREAS

Industrial wipes removes difficult contaminants, such as adhesive, gasket residue, bitumen, silicone, ink, oil, grease, lubricants and paint from surfaces. Usable on hands.



One package has **20** PCS wipes

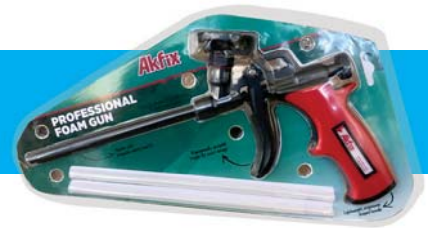
Cylinder Plastic package **75** PCS

Cylinder Plastic package **100** PCS

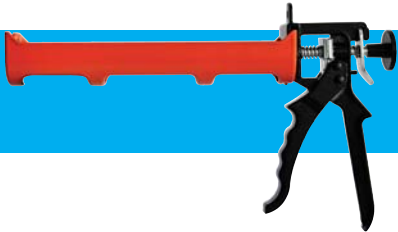
XFG04



XFG07



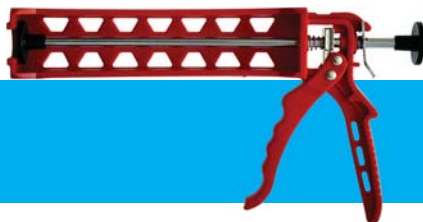
AKT350



XFG06



AKT353



AKT351



AKT123 (600ml)



AKT121 (400ml)
AKT122 (600ml)



Plastic Sealant Nozzle
10 pcs



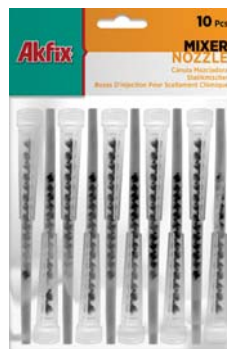
Stock Code	Box
XTM00	24

Pu Foam Plastic Straw
10 pcs



Stock Code	Box
XTM00	24

Plastic Chemical
Anchor Mixer 10 pcs



Stock Code	Box
XTM00	24

Plastic Sausage
Sealant Nozzle 10 pcs



Stock Code	Box
XTM00	24

Sealant Finishing
Tool Set



Stock Code	Box
BYM4	96

TAPES



PRODUCT NAME

TYPE

BOX / PCS

Anti-Slip Tape	25 mm X 5 m	48
Anti-Slip Tape	50 mm x 15 m	24
Acrylic Double Foam Sided Tape	10 mm x 5 m	100
Acrylic Double Foam Sided Tape	15 mm x 5 m	70
Acrylic Double Foam Sided Tape	20 mm x 5 m	60
Acrylic Double Foam Sided Tape	24 mm x 5 m	44
Acrylic Double Foam Sided Tape	30 mm x 5 m	60
Acrylic Double Foam Sided Tape	40 mm x 5 m	30
Acrylic Double Foam Sided Tape	50 mm x 5 m	30
Masking Tape Hot - Melt Glue 50°	18 mm x 25 m	96
Masking Tape Hot - Melt Glue 50°	24 mm x 25 m	72
Masking Tape Hot - Melt Glue 50°	36 mm x 25 m	48
Masking Tape Hot - Melt Glue 50°	48 mm x 25 m	36
Masking Tape Natural Rubber Glue and Semi - Creep Paper 60°	18 mm x 35 m	96
Masking Tape Natural Rubber Glue and Semi - Creep Paper 60°	24 mm x 35 m	72
Masking Tape Natural Rubber Glue and Semi - Creep Paper 60°	36 mm x 35 m	48
Masking Tape Natural Rubber Glue and Semi - Creep Paper 60°	48 mm x 35 m	36
Masking Tape Natural Rubber Glue and Semi - Creep Paper 80°	18 mm x 35 m	96
Masking Tape Natural Rubber Glue and Semi - Creep Paper 80°	24 mm x 35 m	72
Masking Tape Natural Rubber Glue and Semi - Creep Paper 80°	30 mm x 35 m	48
Masking Tape Natural Rubber Glue and Semi - Creep Paper 80°	48 mm x 35 m	36
Duct Tape Grey	48 mm x 40 m	96/6
Duct Tape Black	49 mm x 40 m	96/6
Duct Tape Red	48 mm x 40 m	96/6
Duct Tape Yellow	48 mm x 10 m	96/6
Duct Tape Green	48 mm x 10 m	96/6
Duct Tape Blue	48 mm x 10 m	96/6
Caution Tape	50 mm x 180 m	72
Caution Tape	50 mm x 360 m	24
Caution Tape	70 mm x 180 m	24
Caution Tape	70 mm x 360 m	12
Floor Marking Tape	50 mm x 25 yds	24

Akfix®

HYGIENE

HAND SANITISER

Alcohol Based Hygienic Hand Rinse Agent



99.9% MAXIMUM PROTECTION AGAINST ALL KINDS OF BACTERIAS

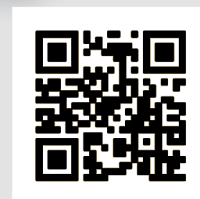
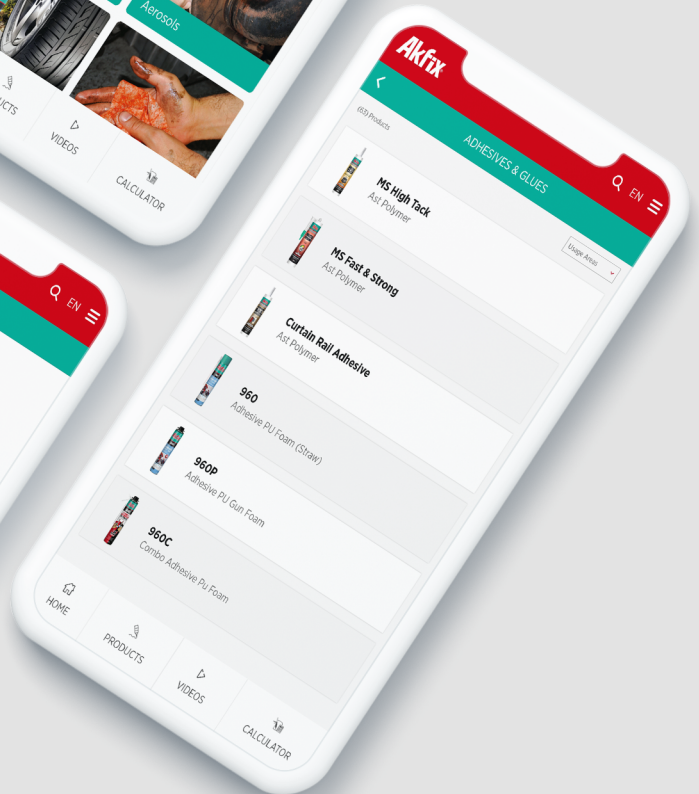
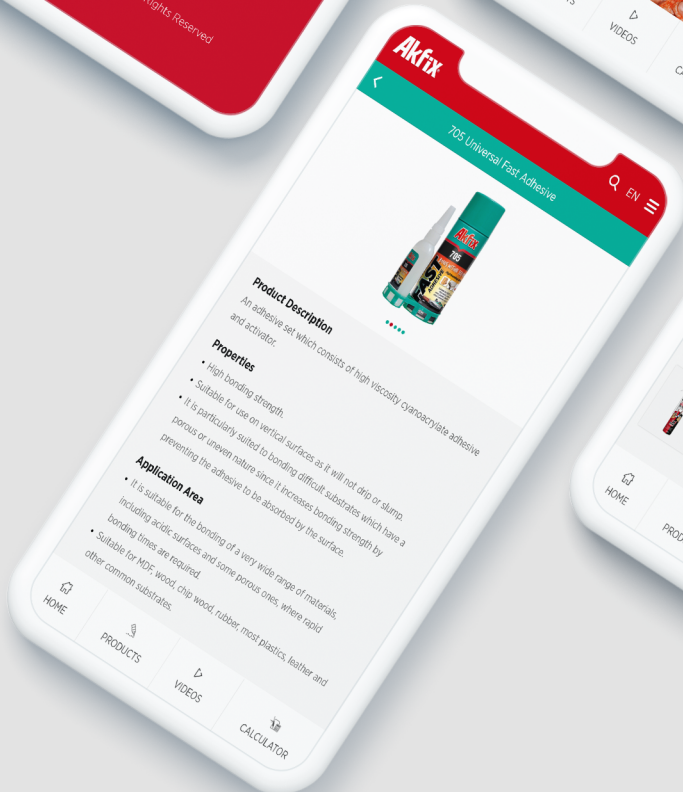
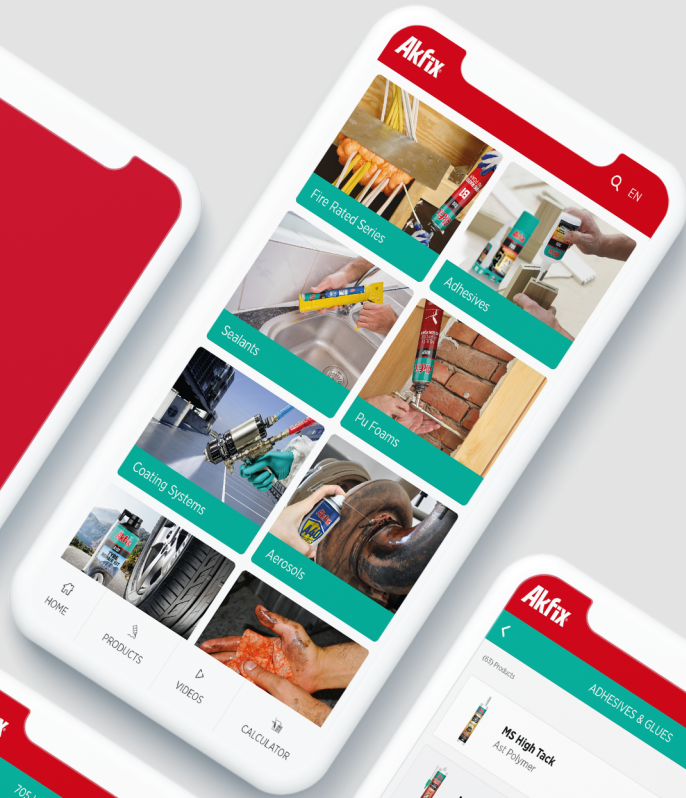
Easy and practical cleaning by disinfecting bacteria without usage of soap and water whatever and wherever you want

FDA | **Biocidal** | **EN1500**
Approved | Licensed | Certified



Product Code	Stock Code	Volume	Box
Akfix Hand Sanitizer Gel	HSG100.3	100 ml	48
Akfix Hand Sanitizer Gel With Pump	HSG100.4	500 ml	24
Akfix Hand Sanitizer Gel With Pump	HSG100.5	1000 ml	12
Akfix Hand Sanitizer Liquid	HSL120.2	100 ml	48
Akfix Hand Sanitizer Liquid With Pump	HSL120.3	500 ml	24
Akfix Hand Sanitizer Liquid With Pump	HSL120.5	1000 ml	12
Akfix Hand Sanitizer Liquid	HSL120.7	5 lt	4





Download on the Google Play & App Store



Akfix®

MASTER OF SOLUTIONS



CREATES PERMANENT SOLUTIONS

www.Akfix.com